

Appliance Transaction Modules



**Connect the Enterprise to Controllers,
and Controllers to Controllers,
without Programming**

Leaders in Data Exchange Modules

Online
DEVELOPMENT INC.



Key Benefits

Faster Commissioning

- Add module(s) to existing systems w/no changes to PAC/PLC programs
- Graphical configuration – no scripting or programming
- Supports multiple controllers – mix vendors and types

Robust Security

- Password controlled user access
- Updates controlled by configuration software

Boosts Productivity

- Optimized data exchange via dedicated hardware and embedded software

Lower Equipment & Maintenance Cost

- No middleware software and general purpose computer required
- No operating system updates

Simplified Data Exchange

When it comes to transferring data between an enterprise system and multiple types of controllers, you have many options. At Online Development Inc. (OLDI) our focus is products designed specifically for data transfer. Our Appliance Transaction Modules are more than mere gateways. These intelligent products:

- Automatically find all established tag data
- Connect via high-speed Ethernet® or controller backplanes
- Setup via graphical configuration screens
- Require no scripting or programming
- Retain PLC/PAC programs unchanged

Why OLDI?

Beginning with the Allen-Bradley® 1771 BASIC™ module over 20 years ago, we continue to provide Rockwell Automation and others with innovative products for a wide range of controller platforms. Today, that innovation continues with latest cATM® Controller-to-Controller modules and eATM® tManager® Enterprise-to-Controller modules.



eATM tManager for ControlLogix Chassis

What are Appliance Transaction Modules?

Appliance Transaction Modules (ATMs):

- Do just one thing and do it well: Transfer data to and from one Application/System to another Application/System.
- Are easy to configure. They are designed to “Configure and Go.” That means there is no:
 - Code to write
 - Command prompt
 - Installable or updatable code; updates as full firmware images only
 - Installation services

Enterprise-to-Controller ATMs

eATM tManager – The newest module, adds support for message-based systems such as JMS (Java Messaging Services), as well as adapters for databases and communications. Data transfer integrity is improved with advanced store and forward and failover options.



eATM tManager Panel Mount

Controller-to-Controller ATMs

cATM BLY90 – This module connects Allen-Bradley ControlLogix PACs to legacy Bailey® Net90™ and Infi90™ DCS systems. It is being actively promoted by the Rockwell Automation Process Business as a key element of their DCS migration initiative.

cATM Universal Gateway – This single module includes all the drivers needed to enable you to connect a ControlLogix PAC to over 50 brands of controllers and 100 drivers.

eATM tManager Enterprise-to-Controller Modules

Easy-to-Use

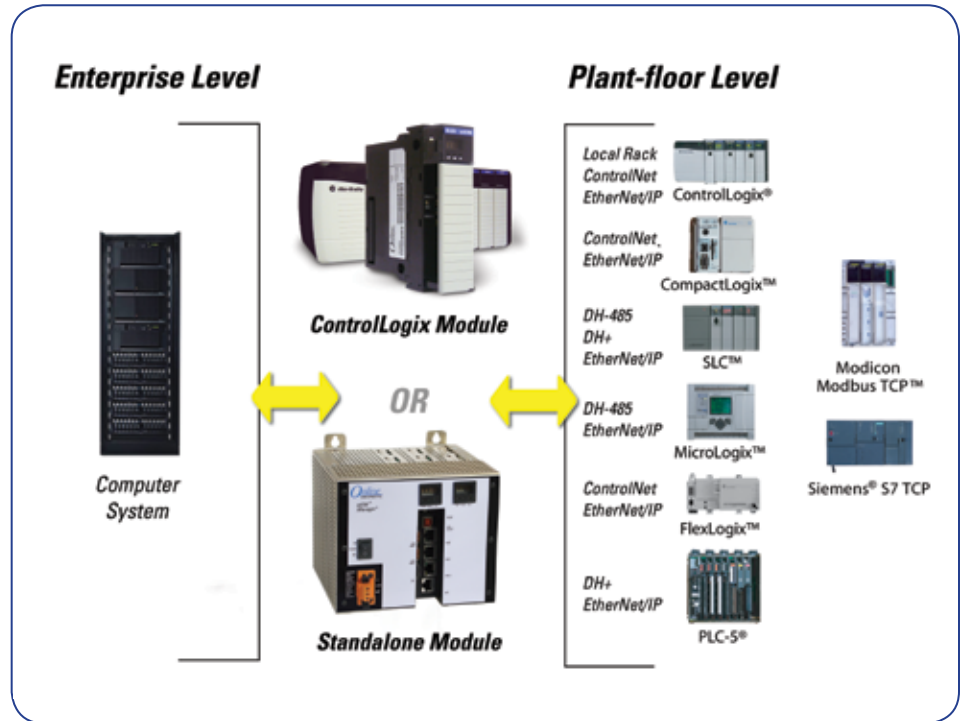
- Graphical user interface for “Configure and Go” mapping of tags. Intuitive screens, drag and drop operation and pull down menus reduce configuration time
- Automatically recognizes and displays all plant floor controller tags, and enterprise database tables or message queues
- Trigger-initiated data exchange can be set based on values, time and other characteristics

Capabilities

- **ControlLogix PAC Module**
 - Full backplane communication
 - Two independent Ethernet ports
- **Standalone Module**
 - Two independent Ethernet ports
 - Optional power failure protection
- **Enterprise System Flexibility**
 - Messaging Adapters: IBM® WAS JMS, Red Hat® JBoss JMS
 - Database Adapters: Microsoft® SQL, IBM DB2 (AS400, System i, z/OS), Oracle®
- **Controller Flexibility. Automation Adapters with Drivers for:**
 - Rockwell Automation CIP via ControlLogix backplane
 - Rockwell Automation EtherNet/IP™
 - Siemens® S7 TCP
 - Modicon® Modbus® TCP
- **Other Adapters**
 - TCP/IP, UDP, FTP and SMTP
 - Microsoft® Excel™ and Access™

Data Protection

- Choose Store and Forward to cache data bi-directionally, or failover to an alternate destination, after a data communications failure
- All configurations stored in module in onboard non-volatile memory



Typical Uses

- High-end discrete manufacturing applications where large amounts of critical data need to be transferred with total integrity
- Applications where regulatory requirements mean track and trace data needs are absolute and data loss is not acceptable

Comparison to General Purpose Computer Solutions

If there is an existing middleware layer with associated general-purpose computers, software and support staff, you could continue to use this for data transfer. If however, you are looking for tight physical integration, want to minimize or eliminate programming for data exchange, or simply do not want the added expense of middleware and general purpose computers, then an eATM tManager module provides an excellent alternative. In summary:

Enterprise Appliance Transaction Module (eATM) vs General Purpose Computer

	OLDI eATM	General Purpose Computer
Physical Integration	Excellent. ControlLogix Module with full backplane communications.	None (external white box industrial computer).
FactoryTalk® Integration	Excellent.	Excellent.
Security	Excellent. Access only via GUI with password protection (no Telnet or FTP).	Poor to Excellent. Depends on IT process and discipline.
Software Update Control	Excellent. No forced updates.	
Data Exchange	Excellent. Optimized platform.	Good to Excellent.
Cost	Low. Single module with configuration software and person to configure.	Medium to High. External computer with operating system, application(s) software and personnel for programming.

cATM-KPW Universal Gateway

Typical Uses

Intended for users looking for a “Swiss-army knife” solution to interface to a wide variety of controllers and related devices.

Features

- Single-slot ControlLogix module with full backplane communication and two independent Ethernet® ports
- “Configure and Go” mapping of ControlLogix tags to over 50 brands of controllers
- On-board configuration interface:
 - Configured with remote desktop via an Ethernet port
 - No additional configuration software required
- Import/export/backup/restore functions



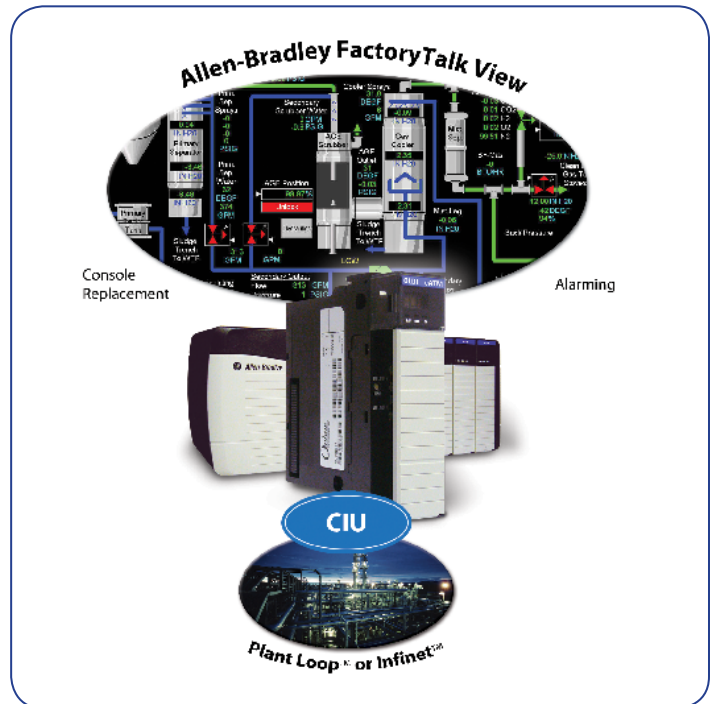
cATM-BLY Bailey DCS Interface Module

Typical Uses

Migrate Infi90™/Net90™ systems to connect to Allen-Bradley ControlLogix PACs.

Features

- Single-slot ControlLogix module with full backplane communication and two independent Ethernet ports
- “Configure and Go” mapping of ControlLogix tags to Bailey tags (Bailey-to-CSV file tag-conversion utility available from Rockwell Automation)
- On-board configuration interface
- Configured with remote desktop via an Ethernet port
- No additional configuration software required
- Flexible data handling
- Supports DCS Block functions
- System status monitoring



About Online Development

Online Development Inc. (OLDI) designs and manufactures factory automation products to help manufacturers simplify data transaction, control and communications tasks.

Products include Appliance Transaction Modules (ATMs) for both Enterprise and Controller-level data exchange. Enterprise Appliance Transaction Modules (eATMs) simplify and manage the exchange of data between general-purpose computer systems at the plant and enterprise level with factory floor controllers. Controller Appliance Transaction Modules (cATMs) enable connectivity to many brands and types of PLCs/PACs and DCS.

OLDI also has a line of open control products to enable the development of special applications in PLC/PAC and standalone versions.

In addition to these products, Online Development designs and manufactures a variety of controller modules for leading factory automation companies such as Rockwell Automation and ProSoft Technology. It is a Rockwell Automation Global Encompass Partner, a member of Control Systems Integrators Association and ODVA and participates in partner programs from IBM, Microsoft and Oracle.



Corporate Headquarters: Online Development Inc.

7209 Chapman Highway • Knoxville, TN 37920 USA • www.oldi.com
Phone: In the USA: 800.625.8678 • Outside of the USA: +1.865.251.5252 • Fax: +1.865.579.4740

Europe Operations: Online Development Inc.

Galileo, 303-305, 4a Planta • 08028 Barcelona, Espanha • Telephone: +34 93 394 4462 • Fax: +34 93 439 8927

Asia Pacific Operations: Online Development Inc.

Shanghai, China • Phone: +86 138 1897 4827