

WMQ Adapter

**DB Adapter**

TCP Adapter

SMTP Adapter

IBM DB2 IBM DB2/400 Oracle MSSQL MySQL

# xCoupler IBM® DB2/400 Adapter

## xCoupler Enterprise Transaction Modules

### Connect the Factory Floor to IBM DB2/400 Systems

xCoupler modules with DB2/400 adapters are specifically designed to enable two-tier exchange of manufacturing and processing data from proprietary devices to IBM DB2/400 databases. They are also ideal for sending manufacturing orders and other commands from the business system to the factory floor.

In addition to eliminating cumbersome patchwork systems, these modules are less costly to install and configure, are virtually maintenance-free, scalable to accommodate expansion, provide timely and accurate data, and are extremely secure.



Comparison of a typical plant floor multi-tier system versus the xCoupler two-tier system

### Optimizes DB2/400 Capabilities

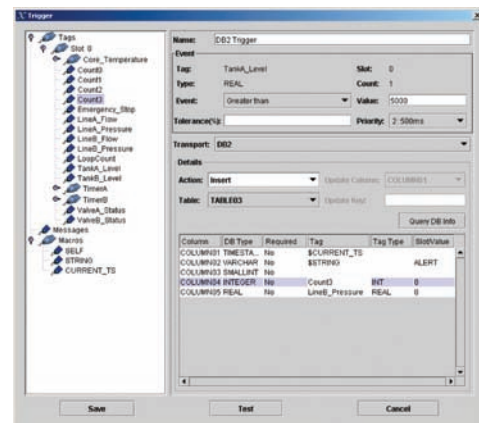
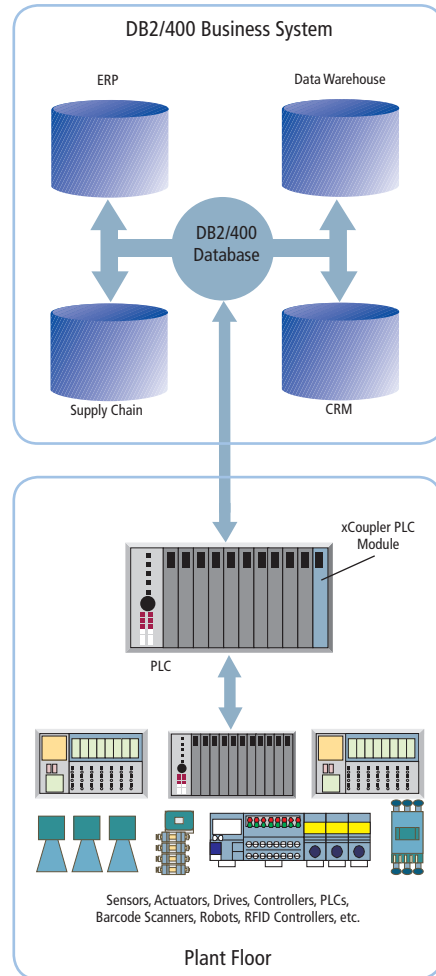
IBM DB2/400 provides the data storage and retrieval capabilities for the development and deployment of critical solutions such as:

- Business intelligence
- Data warehousing
- Enterprise resource planning
- Customer relationship management
- Supply chain management

Inserting critical data into databases in a timely manner provides the information to make crucial business decisions with confidence.

xCoupler's DB2/400 adapter provides seamless integration into the latest database technology. xCoupler requires no drivers or special interfacing code at the enterprise level.

The xCoupler DB2/400 adapter's architecture has been specifically developed using a native interface to operate in the database environment, while conforming to all security requirements. xCoupler enables direct population from the plant floor controller to IBM DB2/400 at the business system level. This eliminates the need for intermediate gateway or bridging systems. xCoupler supports all shipping versions of IBM DB2/400.



# xCoupler IBM® DB2/400 Adapter

## WorkBench Configuration Utility

The WorkBench is used to configure the xCoupler module by allowing users to create a link between plant floor data points and a business system. Through the graphical user interface, the user can connect data points and events to enterprise functions such as: database tables, WebSphere MQ queues, TCP/IP ports and SMTP mail locations. WorkBench provides diagnostics, transaction definitions, status and transaction monitoring, and a security infrastructure to control setup rights and access to manufacturing data. It runs on multiple platforms including Windows and Linux.



For a complete list of adapters available for xCoupler modules and specific modules, visit [www.oldi.com](http://www.oldi.com).

## Flexible Factory Floor Modules

These modules can be used with one or more of the enterprise adapters available.

**PLC/PAC Modules** – xCoupler PLC/PAC modules are designed to snap into the backplanes of popular programmable logic or automation controllers (PLCs/PACs) including Allen-Bradley ControlLogix.



### Custom Modules –

xCoupler hardware and software can be customized for embedded operation or configured for nearly any data communications need, anywhere.

## xCoupler Modules – Factory Floor Tough, Built on a Heritage of Communications Expertise

xCoupler modules were born on the factory floor. They are the result of Online Development's 15-year heritage of developing information exchange appliances. These appliances translate individual proprietary device data such as sensor readings, alarms, equipment control commands and feedback, etc., to multiple enterprise systems.

They are also ideal for sending batch recipes, manufacturing orders and other commands from the enterprise system to the factory floor. This bi-directional data exchange capability enables decision support and operational efficiency to optimize real-time performance management. xCoupler modules are available for a wide variety of plant floor equipment and enterprise systems to help develop and deploy critical solutions such as:

- Business intelligence
- Data warehousing
- Enterprise resource planning
- Customer relationship management
- Supply chain management

These modules can also provide storage and retrieval capabilities for:

- Production tracking
- Quality data
- Downtime reporting
- Inventory tracking
- Plant operations reporting
- Plant floor manufacturing ordering and sequencing
- Batch recipes to processing equipment

Adapters and modules are also available to provide electronic mail capabilities using SMTP for:

- Alerts for equipment failure
- Alerts for process running out of pre-defined specifications
- Alerts for low inventory levels
- Alerts for quality problems
- Development of periodic production reports

Adapters with TCP/IP are also available to send data across networks to support:

- Custom business applications
- Alerts to wireless devices such as PDAs
- Custom manufacturing operations



7209 Chapman Highway | Knoxville, TN 37920 USA  
USA: 800-625-8678 • International: +1.865.251.5252 • Fax: 865.579.4740 • [www.oldi.com](http://www.oldi.com)