



## Introduction

Thank you for choosing an xCoupler™ enterprise transaction module to exchange plant floor data with a business system. This Guide is an overview to help you install the xCoupler module, setup administrative and security parameters and configure its operation. Your xCoupler package includes:

- An xCoupler module that installs into an Allen-Bradley® ControlLogix® rack.
- WorkBench™ CD ROM that includes the software needed to establish administrative, security and operating parameters. It also includes an extensive Help section that provides comprehensive information about the module's operation.
- Either a Temporary or Permanent Key to unlock specific adapters for communications, database and messaging systems.
- Factory Defaults:
  - Module IP Address: 192.168.1.254
  - WorkBench Login User Name: admin, Password: admin

## Table of Contents

Preparing the Module for Installation	1-1
WorkBench Software Setup	2-1
Administration Configuration	3-1
Notification Configuration	4-1
Transport Configuration	5-1
Project Configuration	6-1
Trigger Configuration	7-1
Trigger Activation	8-1
Troubleshooting	9-1
Module Specifications	10-1

## Preparing the Module for Installation

1. Install the xCoupler module in the ControlLogix chassis and connect to an Ethernet network by either of the Ethernet connectors on the front of the module.
2. Obtain network configuration for each xCoupler module.

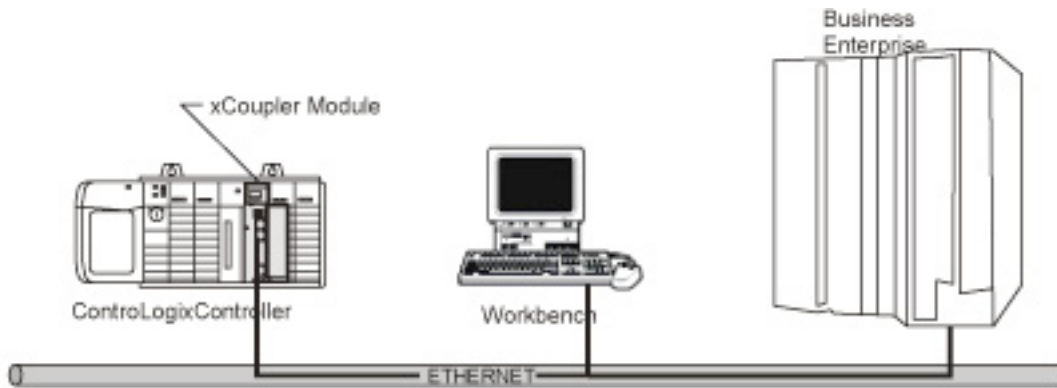
### Network Configuration

If DHCP:                   Simply Select  
If Fixed IP Address:    IP Address / Subnet Mask / Default Gateway  
If DNS:                    DNS Search Path / Alternate DNS Servers



**NOTE:** The xCoupler module obtains all of its information from the ControlLogix processor in its local rack. An xCoupler module can communicate with multiple ControlLogix processors in the same local rack. Multiple xCoupler modules can be placed in the same rack.

3. Gather information on the destination for your data (see Transport Configuration section beginning on page 5-1 of this Guide for specific information that is required for your transport type).



**NOTE:** If your transport is a database, obtain information on the tables and columns in those tables where your data will be placed.

At the same time, gather the SMTP Server address that will be used for Administration screens to develop Exception Notifications and Store & Forward Notifications, as well as, email transport configuration.

4. Setup a PC to communicate with the default IP address provided with the xCoupler module from the factory

**NOTE:** Your device will ship with the default IP address of 192.168.1.254. A cross-over cable is provided with the WorkBench utility to support the setup of this IP address.

5. Install the Workbench utility on a PC by placing the CD-ROM in your PC's CD-ROM drive and running xCoupler Setup.

- You will be requested to input your WorkBench Key. At this time, you may either run from the temporary Key located on the WorkBench CD, or request the permanent Key for the WorkBench utility. Since the permanent Key is tied to the MAC ID of the PC, the temporary Key option allows you to postpone the decision of the permanent location of your workbench.

**NOTE:** The license key is tied to the MAC ID of the PC.

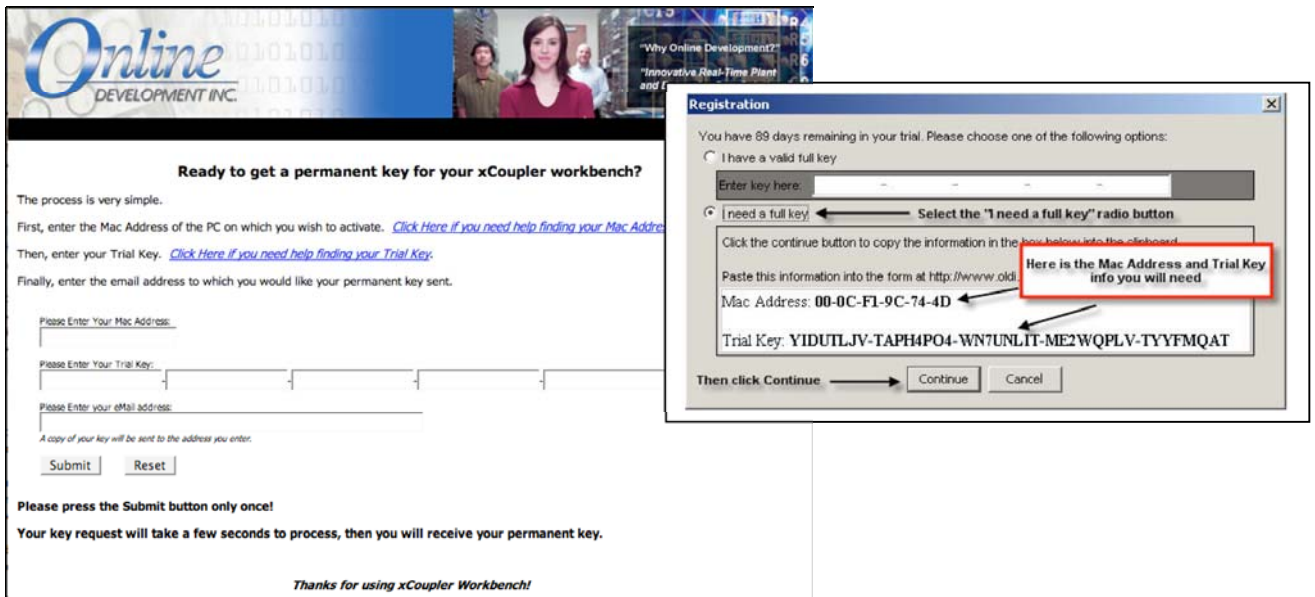


**Step 1:** Press Enter Key

**Step 2: (If Temporary Key Option):** Type the Key numbers located on the WorkBench CD into the Enter Key Here field then press Continue. Then go to the Begin Setup section of this Quick Start Guide on page 2-1.

**NOTE:** You will be reminded of the expiration of this workbench key each time you start your WorkBench application until you have installed the Permanent Key.

**Step 2: (If Permanent Key Option):** Go to <http://www.old.com/xcla> on the Internet and follow the instructions on the screens.



Once on this website:

- Enter the MAC ID from the WorkBench utility Registration screen.

2. Enter the Temporary Key provided with the Workbench CD.
3. Enter your email address.
4. Press Submit (only once).
5. Your Permanent Key will be emailed to you email address immediately.
6. After you have received your Permanent Key by email, open the WorkBench utility Registration screen and then enter the Permanent Key in the Enter Key Here field, press Continue (only once).

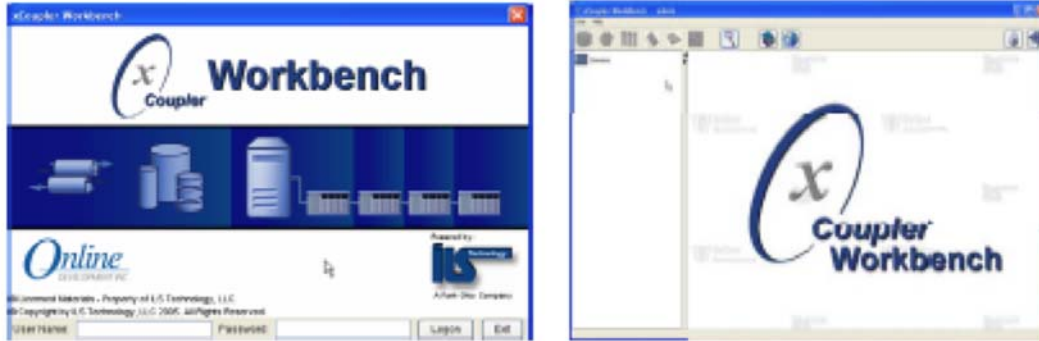
If you have any questions, contact support by submitting a server request at <http://www.oldi.com>

**NOTE:** You can access this registration information in the WorkBench utility under Help, then select Registration.



## WorkBench Software Setup

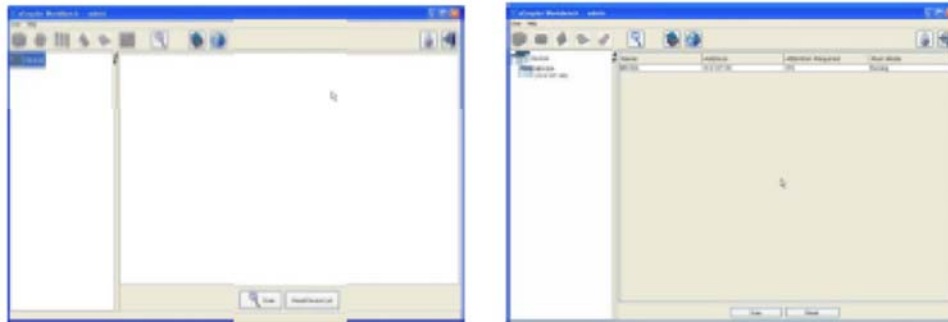
1. After installing the License Key, you can login into the xCoupler Module's WorkBench configuration tool by using the following factory defaults (username: admin, password: admin).



2. Click on Device and then select Scan and to provide your network information.

*NOTE: You will scan for this factory default address (192.168.1.254). Later in Administration Configuration section of this Guide, you will change the address of the module for your network.*

When the scan has completed, a list of xCoupler module(s) found will be displayed in the left pane.



3. For each xCoupler module, repeat the following the instructions in the following sections in this order:
  - Administration Configuration
  - Transport Configuration
  - Trigger Configuration
  - Trigger Activation