

WMQ Adapter

DB Adapter

TCP Adapter

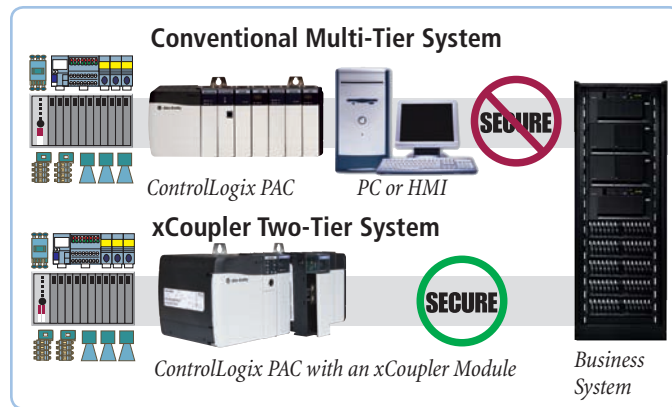
SMTP Adapter

SMTP Adapter

## xCoupler SMTP Adapter

### xCoupler Enterprise Transaction Modules for Factory Floor and Business Network Communications

xCoupler modules with SMTP adapters are specifically designed to enable two-tier sharing of manufacturing and process data from proprietary devices to a variety of devices via SMTP (Simple Mail Transfer Protocol).



Comparison of a typical plant floor multi-tier system versus the xCoupler two-tier system

In addition to eliminating cumbersome patchwork systems, these modules are less costly to install and configure, are virtually maintenance-free, scalable to accommodate expansion, provide timely and accurate data, and are extremely secure.

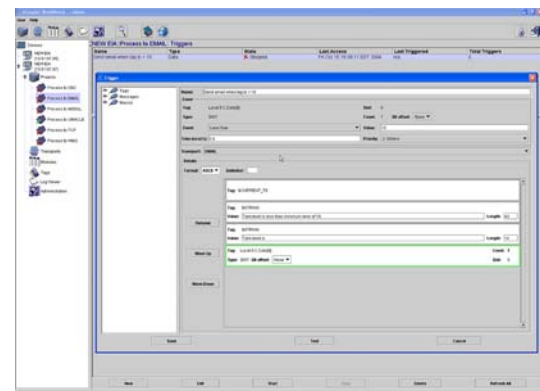
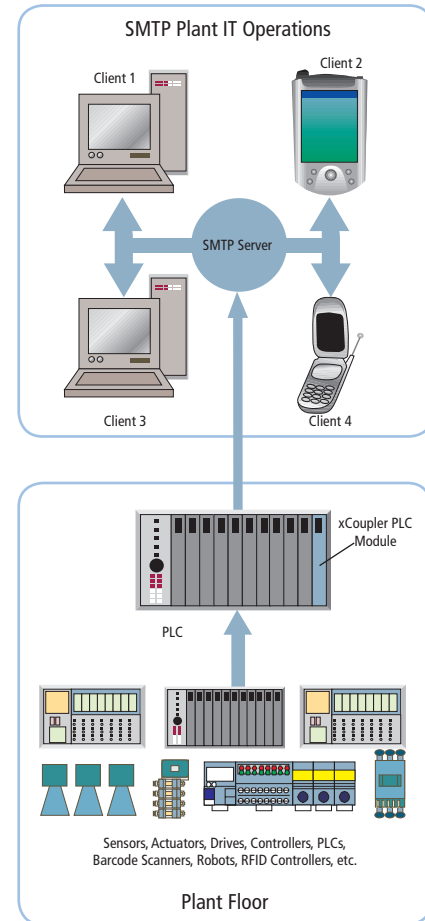
### Optimizes SMTP Capabilities

Electronic mail systems are critical for communications in nearly all companies throughout the world. Receiving immediate information about operational changes or events can translate to significant savings. These operational changes and events could include:

- Alerts for equipment failure
- Alerts for a process running out of specification
- Alerts for low inventory
- Alerts for quality problems
- Periodic production reports

Sending this data directly to key decision makers provides the information to quickly react to operational events as they occur.

The xCoupler SMTP adapter's architecture has been specifically developed using a native interface to operate in this environment and extend the capabilities of SMTP communications' electronic mail systems from the production floor to the enterprise system, eliminating the need for gateway or bridging systems.



# xCoupler SMTP Adapter

## WorkBench Configuration Utility

The WorkBench is used to configure the xCoupler module by allowing users to create a link between plant floor data points and a business system. Through the graphical user interface, the user can connect data points and events to enterprise functions such as: database tables, WebSphere MQ queues, TCP/IP ports and SMTP mail locations. WorkBench provides diagnostics, transaction definitions, status and transaction monitoring, and a security infrastructure to control setup rights and access to manufacturing data. It runs on multiple platforms including Windows and Linux.



For a complete list of adapters available for xCoupler modules and specific modules, visit [www.oldi.com](http://www.oldi.com).

## Flexible Factory Floor Modules

These modules can be used with one or more of the enterprise adapters available.

**PLC/PAC Modules** – xCoupler PLC/PAC modules are designed to snap into the backplanes of popular programmable logic or automation controllers (PLCs/PACs) including Allen-Bradley ControlLogix.



## Custom Modules –

xCoupler hardware and software can be customized for embedded operation or configured for nearly any data communications need, anywhere.

## xCoupler Modules – Factory Floor Tough, Built on a Heritage of Communications Expertise

xCoupler modules were born on the factory floor. They are the result of Online Development's 15-year heritage of developing information exchange appliances. These appliances translate individual proprietary device data such as sensor readings, alarms, equipment control commands and feedback, etc., to multiple enterprise systems.

They are also ideal for sending batch recipes, manufacturing orders and other commands from the enterprise system to the factory floor. This bi-directional data exchange capability enables decision support and operational efficiency to optimize real-time performance management. xCoupler modules are available for a wide variety of plant floor equipment and enterprise systems to help develop and deploy critical solutions such as:

- Business intelligence
- Data warehousing
- Enterprise resource planning
- Customer relationship management
- Supply chain management

These modules can also provide storage and retrieval capabilities for:

- Production tracking
- Quality data
- Downtime reporting
- Inventory tracking
- Plant operations reporting
- Plant floor manufacturing ordering and sequencing
- Batch recipes to processing equipment

Adapters and modules are also available to provide electronic mail capabilities using SMTP for:

- Alerts for equipment failure
- Alerts for process running out of pre-defined specifications
- Alerts for low inventory levels
- Alerts for quality problems
- Development of periodic production reports

Adapters with TCP/IP are also available to send data across networks to support:

- Custom business applications
- Alerts to wireless devices such as PDAs
- Custom manufacturing operations
- File systems
- Custom quality systems



7209 Chapman Highway | Knoxville, TN 37920 USA  
USA: 800-625-8678 • International: +1.865.251.5252 • Fax: 865.579.4740 • [www.oldi.com](http://www.oldi.com)