

WMQ Adapter

DB Adapter

TCP Adapter

SMTP Adapter

WMQ Adapter

xCoupler IBM® WebSphere® and MQ Adapter

xCoupler Enterprise Transaction Modules Connect the Factory Floor to WebSphere MQ Systems

xCoupler modules with WMQ adapters are specifically designed to enable two-tier exchange of manufacturing and processing data from proprietary factory floor devices to WebSphere MQ systems. They are also ideal for sending manufacturing orders and other commands from WebSphere MQ to the factory floor.



Comparison of a typical plant floor multi-tier system versus the xCoupler two-tier system

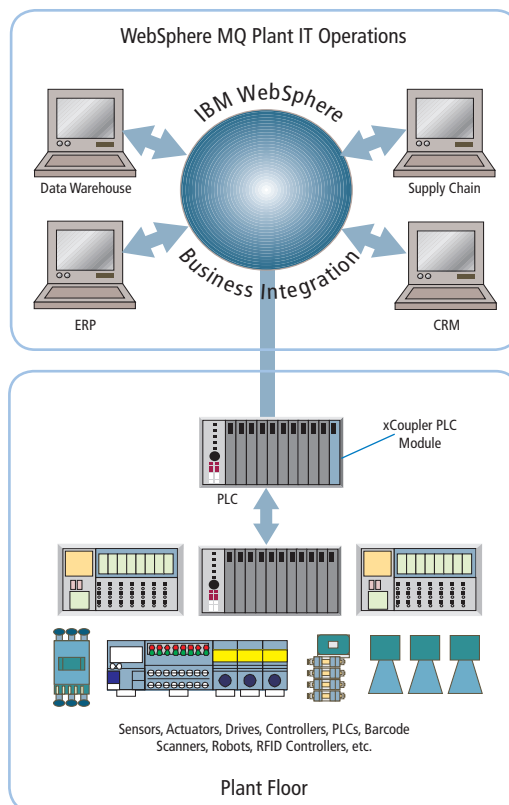
In addition to eliminating cumbersome patchwork systems, these modules are less costly to install and configure, are virtually maintenance-free, scalable to accommodate expansion, provide timely and accurate data, and are extremely secure.

Optimizes WebSphere MQ Capabilities

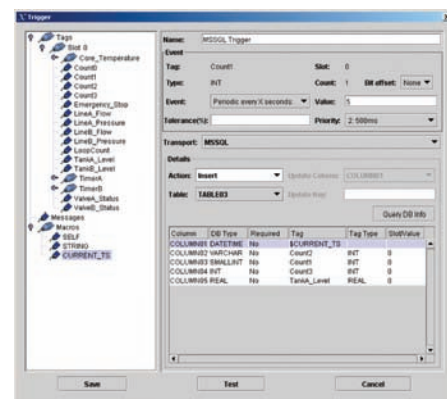
IBM WebSphere MQ enables the easy exchange of information across different platforms to aid in the integration of existing and new business applications. The xCoupler:

- Assures reliable delivery of messages to the WebSphere MQ system.
- Integrates with IBM WebSphere MQ business integration products to provide a direct path to ERP systems, supply chain systems, data warehouses, and business-to-business partners.
- Provides confidence that your critical business information will be delivered once and only once to your business applications without being revealed to unauthorized parties or exposed to tampering enroute.
- Allows sending your business information as soon as it is ready, secure in the knowledge that it will be delivered as soon as your business applications are ready to receive it.

The xCoupler WebSphere MQ adapter seamlessly integrates into WebSphere's application and transaction infrastructure and enhances its security, reliability, and performance environment. There are no drivers or special interface code required at the enterprise level. This makes xCoupler adapters transparent to the system and eliminates maintenance.



The xCoupler module's architecture has been specifically developed using a native interface to operate in this environment and extend the capabilities of plant floor to IBM WebSphere MQ systems to eliminate the need for gateway or bridging systems.



WorkBench Configuration Utility

The WorkBench is used to configure the xCoupler module by allowing users to create a link between plant floor data points and a business system. Through the graphical user interface, the user can connect data points and events to enterprise functions such as: database tables, WebSphere MQ queues, TCP/IP ports and SMTP mail locations. WorkBench provides diagnostics, transaction definitions, status and transaction monitoring, and a security infrastructure to control setup rights and access to manufacturing data. It runs on multiple platforms including Windows and Linux.



For a complete list of adapters available for xCoupler modules and specific modules, visit www.oldi.com.

Flexible Factory Floor Modules

These modules can be used with one or more of the enterprise adapters available.

PLC/PAC Modules – xCoupler PLC/PAC modules are designed to snap into the backplanes of popular programmable logic or automation controllers (PLCs/PACs) including Allen-Bradley ControlLogix.



Custom Modules –

xCoupler hardware and software can be customized for embedded operation or configured for nearly any data communications need, anywhere.

xCoupler Modules – Factory Floor Tough, Built on a Heritage of Communications Expertise

xCoupler modules were born on the factory floor. They are the result of Online Development's 15-year heritage of developing information exchange appliances. These appliances translate individual proprietary device data such as sensor readings, alarms, equipment control commands and feedback, etc., to multiple enterprise systems.

They are also ideal for sending batch recipes, manufacturing orders and other commands from the enterprise system to the factory floor. This bi-directional data exchange capability enables decision support and operational efficiency to optimize real-time performance management. xCoupler modules are available for a wide variety of plant floor equipment and enterprise systems to help develop and deploy critical solutions such as:

- Business intelligence
- Data warehousing
- Enterprise resource planning
- Customer relationship management
- Supply chain management

These modules can also provide storage and retrieval capabilities for:

- Production tracking
- Quality data
- Downtime reporting
- Inventory tracking
- Plant operations reporting
- Plant floor manufacturing ordering and sequencing
- Batch recipes to processing equipment

Adapters and modules are also available to provide electronic mail capabilities using SMTP for:

- Alerts for equipment failure
- Alerts for process running out of pre-defined specifications
- Alerts for low inventory levels
- Alerts for quality problems
- Development of periodic production reports

Adapters with TCP/IP are also available to send data across networks to support:

- Custom business applications
- Alerts to wireless devices such as PDAs
- Custom manufacturing operations
- File systems
- Custom quality systems



7209 Chapman Highway | Knoxville, TN 37920 USA

USA: 800-625-8678 • International: +1.865.251.5252 • Fax: 865.579.4740 • www.oldi.com