

# **A-B Bulletin 1609 Device Driver Help**

© 2009 Kepware Technologies

# Table of Contents

<b>1</b>	<b>Getting Started.....</b>	<b>3</b>
	Help Contents.....	3
	Overview .....	3
<b>2</b>	<b>Device Setup.....</b>	<b>3</b>
	Device Setup .....	3
	Cable Connections.....	3
	Communication Parameters.....	4
	Community .....	4
	Max Request Size.....	5
	Nonexistent Tag Error Posting.....	5
<b>3</b>	<b>Automatic Tag Database Generation.....</b>	<b>6</b>
	Automatic Tag Database Generation.....	6
<b>4</b>	<b>Data Types Description.....</b>	<b>7</b>
	Data Types Description.....	7
<b>5</b>	<b>Address Descriptions.....</b>	<b>8</b>
	Address Descriptions for Generic Model.....	8
	Address Descriptions for Bulletin 1609 Model.....	8
<b>6</b>	<b>Traps .....</b>	<b>26</b>
	Trap Messages.....	26
<b>7</b>	<b>Error Descriptions.....</b>	<b>26</b>
	Error Descriptions.....	26
	<b>Address Validation.....</b>	<b>27</b>
	Address Validation.....	27
	Missing address.....	27
	Device address '<address>' contains a syntax error.....	27
	Address '<address>' is out of range for the specified device or register.....	28
	Device address '<address>' is not supported by model '<model name>'.....	28
	Data Type '<type>' is not valid for device address '<address>'.....	28
	Device address '<address>' is Read Only.....	28
	<b>Device Status Messages.....</b>	<b>28</b>
	Device Status Messages.....	28
	Device '<device name>' is not responding.....	29
	Unable to write to '<address>' on device '<device name>'.....	29
	<b>Communication Messages.....</b>	<b>29</b>
	Communication Messages.....	29
	Winsock Initialization Failed (OS Error=n).....	29
	Winsock V1.1 or Higher Must Be Installed.....	29
	<b>Device Specific Messages.....</b>	<b>30</b>
	Device Specific Messages.....	30
	Failed to get response from device '<device>' for block tag '<tag>'.....	30
	Failed to get response from device '<device>' for tag '<tag>'.....	30
	Failed to send request for address '<address>' in device '<device>'.....	30
	Failed to send request for block tag '<tag>' in device '<device>'.....	31
	The address '<address>' is configured as read-only in device '<device>'.....	31
	The request size or the returned value for object ID '<ID>' in device '<device>' is too large.....	31
	The returned/write value for block ID '<ID>' in device '<device>' is too large.....	31

The value written is not allowed at address '<address>' in device '<device>'..... 32

UPS returned 'general error' for '<address>' in device '<device>'..... 32

UPS returned 'no such name' error on block tag '<tag>' in device '<device>'. Deactivating block tag <tag>.... 32

UPS returned 'no such name' error on '<tag>' in device '<device>'. Deactivating '<tag>'..... 32

UPS returned unknown error for block tag '<tag>' in device '<device>'. Error number = '<number>'..... 32

UPS returned unknown error for '<address>' in device '<device>'. Error number = '<number>'..... 33

**Automatic Tag Database Generation Messages..... 33**

Automatic Tag Database Generation Messages..... 33

Unable to generate a tag database for device <device name>. Reason: Low memory resources..... 33

**Index**

## **A-B Bulletin 1609 Device Driver Help**

---

Help version 1.011

### **CONTENTS**

#### **[Overview](#)**

What is the A-B Bulletin 1609 Device Driver?

#### **[Device Setup](#)**

How do I configure a device for use with this driver?

#### **[Automatic Tag Database Generation](#)**

How can I easily configure tags for this driver?

#### **[Data Types Description](#)**

What data types does this driver support?

#### **[Address Descriptions](#)**

How do I address a data location on a A-B Bulletin 1609 device?

#### **[Error Descriptions](#)**

What error messages does the A-B Bulletin 1609 driver produce?

### **Overview**

---

The Allen Bradley (A-B) Bulletin 1609 Device Driver was designed specifically for use with 32 bit OPC server products running on Intel microprocessor based computers. For operating system requirements, please refer to the OPC server help documentation.

It is intended for use with any device that supports the **Simple Network Management Protocol** (SNMP), including the A-B Bulletin 1609-U500N Ser A UPS.

### **Device Setup**

---

#### **Supported Devices**

Bulletin 1609 UPS (includes 1609-U500N Ser A) and Generic (other SNMP protocol supporting devices).

#### **Communication Protocol**

SNMP (Simple Network Management Protocol)

#### **Timeout Parameters**

Connect timeout: 1 to 60 seconds

Request timeout: 100 to 30000 milliseconds

Attempts: 1 to 10

#### **See Also:**

**[Cable Connection](#)**

**[Communication Parameters](#)**

**[Community](#)**

**[Max Request Size](#)**

**[Nonexistent Tag Error Posting](#)**

### **Cable Connections**

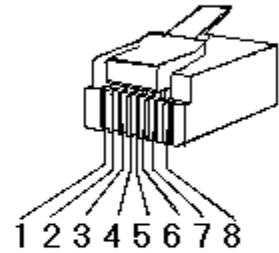
---

## Patch Cable (Straight Through)

TD + 1	OR/WHT	OR/WHT	1	TD +
TD - 2	OR	OR	2	TD -
RD + 3	GRN/WHT	GRN/WHT	3	RD +
4	BLU	BLU	4	
5	BLU/WHT	BLU/WHT	5	
RD - 6	GRN	GRN	6	RD -
7	BRN/WHT	BRN/WHT	7	
8	BRN	BRN	8	

RJ45 RJ45

## 10 BaseT



## Crossover Cable

TD + 1	OR/WHT	GRN/WHT	1	TD +
TD - 2	OR	GRN	2	TD -
RD + 3	GRN/WHT	OR/WHT	3	RD +
4	BLU	BLU	4	
5	BLU/WHT	BLU/WHT	5	
RD - 6	GRN	OR	6	RD -
7	BRN/WHT	BRN/WHT	7	
8	BRN	BRN	8	

RJ45 RJ45

## 8-pin RJ45

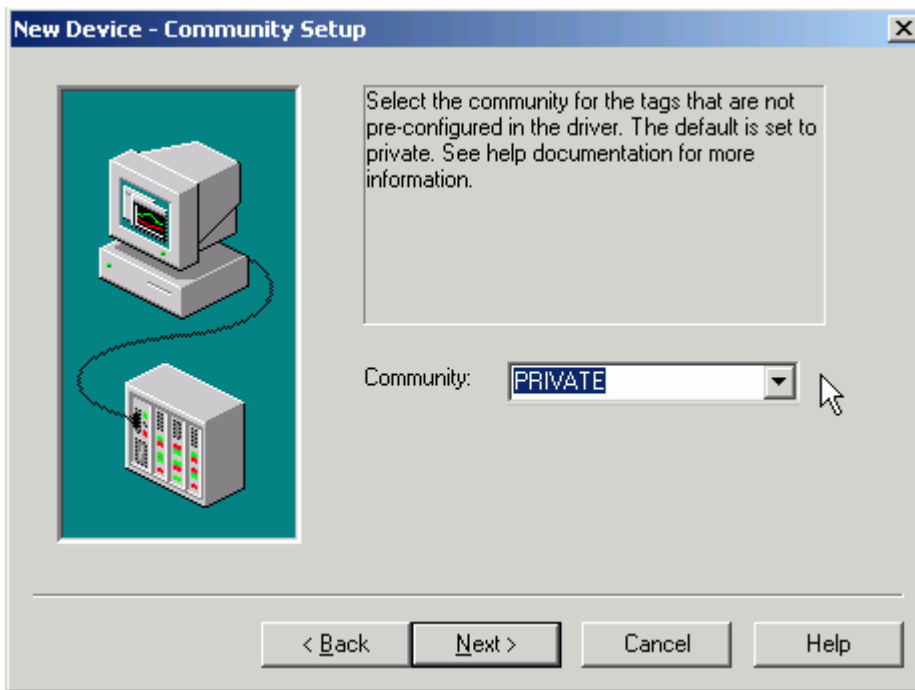
**Communication Parameters****Port Number**

Specifies the port number the remote device is configured to use. The default port number is 161, which is the standard SNMP port.

**IP Protocol**

The A-B Bulletin 1609 driver connects to supported devices using the User Datagram Protocol (UDP), and requires Winsock V1.1 or higher.

**Community**



**Community** specifies the name of the SNMP community, which is a group of devices (SNMP agents) and management stations (SNMP managers). There are **Private** and **Public** communities, but the default is set to private. To enter a name other than Private or Public, click inside the Community field and type the name.

### SNMP Communities

A device can be configured to belong to multiple communities. In the A-B Bulletin 1609 driver, the **community name** functions as a password to authenticate messages sent between a management station and a device. The device will not respond to requests from management stations that do not belong to one of the communities configured for that device. SNMP default communities are as follows:

**Write** = Private

**Read** = Public

When a device (SNMP agent) receives a request, it checks the community name in the request.

- The device will respond to SNMP Get and Get-next requests if the community name matches a Read Only community to which the device belongs.
- The device will respond to SNMP Get, Get-next, and Set requests if the community name matches a Read/Write community to which the device belongs.

---

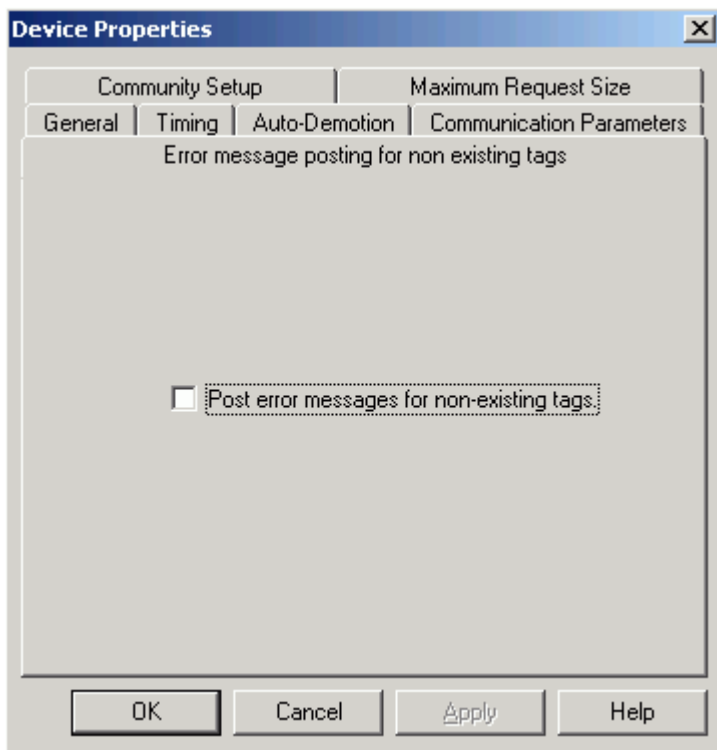
### Max Request Size

#### Number of Items / Message

The A-B Bulletin 1609 driver takes advantage of multiple-items request in the SNMP protocol. This setting tells the driver how many items to fetch per request. The default is 25.

---

### Nonexistent Tag Error Posting



The A-B Bulletin 1609 driver auto-generates tags when the Bulletin 1609 model is selected (tags are not generated when the **Generic Model** is selected). The [auto-generation process](#) uses a fixed database and may generate tags that do not exist in the device. As a result, the SNMP agent running in the device will return "NO SUCH NAME" errors that will be written in the server log. To keep the server error log clear of numerous "NO SUCH NAME" errors, the **Post Error Messages for Non-existing Tags** setting is unchecked by default.

If this setting is checked, all "NO SUCH NAME" errors that are returned during automatic tag generation will be written to the server error log.

## **Automatic Tag Database Generation**

---

### **Overview**

This driver makes use of the OPC Server's Automatic Tag Database Generation feature when the Bulletin 1609 UPS model is selected. The automatic tag database generation feature enables drivers to automatically create tags using a fixed database.

**Note:** Automatic tag database generation does not occur if the **Generic Model** is selected.

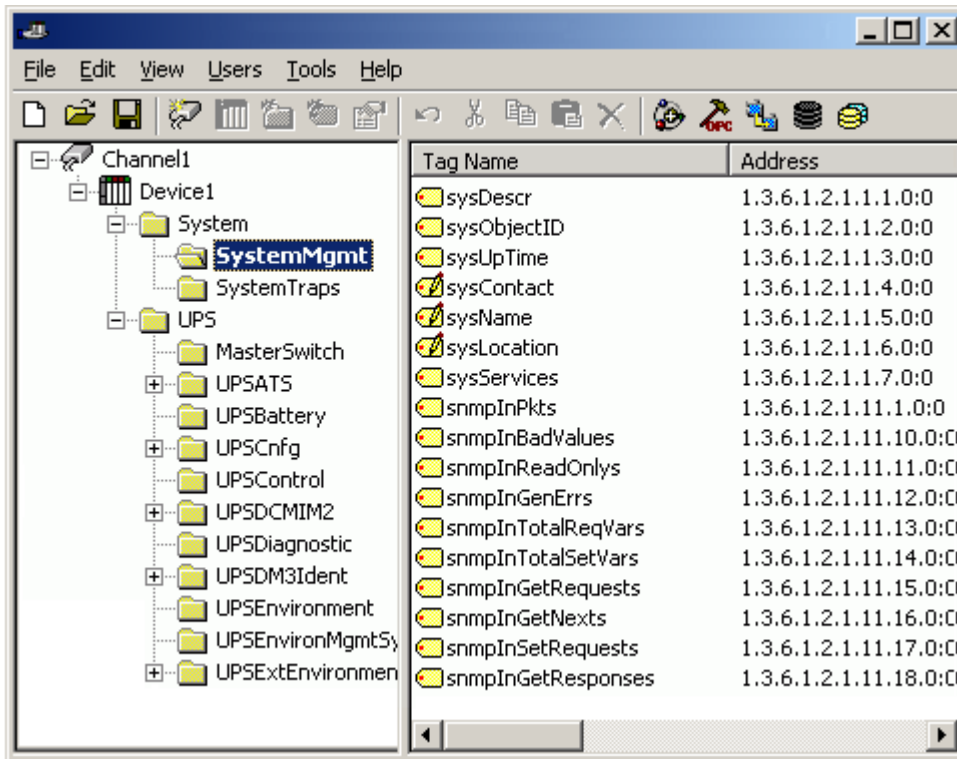
### **Operation**

Automatic tag database generation occurs when the Bulletin 1609 UPS model is selected.

### **Group and Tag Naming**

A tag group is created for each of the groups listed in [Address Descriptions](#).

The following screenshot illustrates the results of automatic tag database creation.



See Also: [Nonexistent Tag Error Posting](#)

## Data Types Description

The SNMP protocol supports numerous data types. While the A-B 1609 driver does not support all SNMP data types, some have been mapped to the closest primitive data types. The A-B 1609 model currently supports the following SNMP data types:

- IPADDRESS (mapped as STRING)
- NSAPADDRESS (mapped as STRING)
- OBJECTIDENTIFIER (mapped as STRING)
- OCTETSTRING (mapped as STRING)
- TIMETICKS (mapped as DWORD)
- COUNTER32 (mapped as DWORD)
- GAUGE (mapped as DWORD)
- INTEGER (mapped as LONG)

Data Type	Description
Word	Read: Unsigned 16 bit value read from device. Write: Value passed directly on to device.
DWord	Read: Unsigned 32 bit value read from device. Write: Value passed directly on to device.
Long	Read: Signed 32 bit value read from device. Write: Value passed directly on to device.
Short	Read: Signed 16 bit value read from

	device.
	Write: Value passed directly on to device.
String	Read: Reads maximum of 255 characters.
	Write: Value passed directly on to device.

## Address Descriptions for Generic Model

The A-B Bulletin 1609 driver supports devices that fall under the **iso:identified-organization namespace**. Hence, all the addresses (or Object IDs in SNMP terms) for accessing object data in this driver must start with the 1.3 prefix which denotes the iso:identified-organization namespace. The syntax for addresses is as follows.

1.3.[X.Y.Z.....]:nOffset

where X, Y and Z mean any number (0-65535) and "..." means the sequence can go forever provided the length of the whole address does not exceed 64 characters. The offset range is 0-25.

There are two types of objects in SNMP, primitive single-instance leaf objects and columnar leaf objects. Primitive single-instance objects can be accessed just by their Object ID. Columnar leaf objects, however, require a table index, which is determined by the **nOffset** in the address. The nOffset must be zero when accessing a primitive single-instance leaf object. For a columnar leaf object, nOffset must be the index in its tree.

### Example of a primitive single instance leaf Object ID:

1.3.6.1.4.1.318.2.1.6.2.0:0, where 1.3.6.1.4.1.318.2.1.6.2.0 is the Object ID and 0 is the offset.

### Example of a columnar leaf Object ID:

1.3.6.1.4.1.318.2.1.2.1.2:1, where 1.3.6.1.4.1.318.2.1.2.1.2 is the Object ID and 1 is the offset.

The Generic Model Objects data type is set to DWORD by default, but can be changed to WORD or STRING upon users' discretion. For the correct data types, refer to the device user manual.

## Address Descriptions for Bulletin 1609 Model

In the A-B Bulletin 1609 driver, object data in SNMP devices can be accessed using the syntax described in [Generic Model Addressing](#). Tags for the A-B Bulletin 1609 model are auto-generated and categorized under groups (the tags are generated when the A-B Bulletin 1609 UPS model is selected). The auto-generated tags are shown below in groups. Groups are shown in alphabetical order.

### Group: None

Tag Name	Object ID	Data Type	Access
nomeIdentName	1.3.6.1.4.1.318.1.1.13.1.1.0:0	String	Read Only
serialPort2Mode	1.3.6.1.4.1.318.1.1.3.1.2.1.1.0:0	Long	Read/Write
setPulseOnTXD	1.3.6.1.4.1.318.1.1.3.1.2.2.1.0:0	Long	Read/Write
upsCommStatus	1.3.6.1.4.1.318.1.1.1.8.1.0:0	Long	Read Only

### Group: System

Tag Name	Object ID	Data Type	Access
egpAs	1.3.6.1.2.1.8.6.0:0	Long	Read Only
egpInErrors	1.3.6.1.2.1.8.2.0:0	DWord	Read Only
egpInMsgs	1.3.6.1.2.1.8.1.0:0	DWord	Read Only
egpNeighAddr_01	1.3.6.1.2.1.8.5.1.2:1	DWord	Read Only
egpNeighAs_01	1.3.6.1.2.1.8.5.1.3:1	Long	Read Only
egpNeighEventTrigger_01	1.3.6.1.2.1.8.5.1.15:1	Long	Read/Write
egpNeighInErrMsgs_01	1.3.6.1.2.1.8.5.1.8:1	DWord	Read Only
egpNeighInErrs_01	1.3.6.1.2.1.8.5.1.5:1	DWord	Read Only

egpNeighInMsgs_01	1.3.6.1.2.1.8.5.1.4:1	<b>DWord</b>	Read Only
egpNeighIntervalHello_01	1.3.6.1.2.1.8.5.1.12:1	<b>Long</b>	Read Only
egpNeighIntervalPoll_01	1.3.6.1.2.1.8.5.1.13:1	<b>Long</b>	Read Only
egpNeighMode_01	1.3.6.1.2.1.8.5.1.14:1	<b>Long</b>	Read Only
egpNeighOutErrMsgs_01	1.3.6.1.2.1.8.5.1.9:1	<b>DWord</b>	Read Only
egpNeighOutErrs_01	1.3.6.1.2.1.8.5.1.7:1	<b>DWord</b>	Read Only
egpNeighOutMsgs_01	1.3.6.1.2.1.8.5.1.6:1	<b>DWord</b>	Read Only
egpNeighState_01	1.3.6.1.2.1.8.5.1.1:1	<b>Long</b>	Read Only
egpNeighStateDowns_01	1.3.6.1.2.1.8.5.1.11:1	<b>DWord</b>	Read Only
egpNeighStateUps_01	1.3.6.1.2.1.8.5.1.10:1	<b>DWORD</b>	Read Only
egpOutErrors	1.3.6.1.2.1.8.4.0:0	<b>DWord</b>	Read Only
icmpInAddrMaskReps	1.3.6.1.2.1.5.13.0:0	<b>DWord</b>	Read Only
icmpInAddrMasks	1.3.6.1.2.1.5.12.0:0	<b>DWord</b>	Read Only
icmpInDestUnreachs	1.3.6.1.2.1.5.3.0:0	<b>DWord</b>	Read Only
icmpInEchoReps	1.3.6.1.2.1.5.9.0:0	<b>DWord</b>	Read Only
icmpInEchos	1.3.6.1.2.1.5.8.0:0	<b>DWord</b>	Read Only
icmpInErrors	1.3.6.1.2.1.5.2.0:0	<b>DWord</b>	Read Only
icmpInMsgs	1.3.6.1.2.1.5.1.0:0	<b>DWord</b>	Read Only
icmpInParmProbs	1.3.6.1.2.1.5.5.0:0	<b>DWord</b>	Read Only
icmpInRedirects	1.3.6.1.2.1.5.7.0:0	<b>DWord</b>	Read Only
icmpInSrcQuenchs	1.3.6.1.2.1.5.6.0:0	<b>DWord</b>	Read Only
icmpInTimeExcds	1.3.6.1.2.1.5.4.0:0	<b>DWord</b>	Read Only
icmpInTimestampReps	1.3.6.1.2.1.5.11.0:0	<b>DWord</b>	Read Only
icmpInTimestamps	1.3.6.1.2.1.5.10.0:0	<b>DWord</b>	Read Only
icmpOutAddrMaskReps	1.3.6.1.2.1.5.26.0:0	<b>DWord</b>	Read Only
icmpOutAddrMasks	1.3.6.1.2.1.5.25.0:0	<b>DWord</b>	Read Only
icmpOutDestUnreachs	1.3.6.1.2.1.5.16.0:0	<b>DWord</b>	Read Only
icmpOutEchoReps	1.3.6.1.2.1.5.22.0:0	<b>DWord</b>	Read Only
icmpOutEchos	1.3.6.1.2.1.5.21.0:0	<b>DWord</b>	Read Only
icmpOutErrors	1.3.6.1.2.1.5.15.0:0	<b>DWord</b>	Read Only
icmpOutMsgs	1.3.6.1.2.1.5.14.0:0	<b>DWord</b>	Read Only
icmpOutParmProbs	1.3.6.1.2.1.5.18.0:0	<b>DWord</b>	Read Only
icmpOutRedirects	1.3.6.1.2.1.5.20.0:0	<b>DWord</b>	Read Only
icmpOutSrcQuenchs	1.3.6.1.2.1.5.19.0:0	<b>DWord</b>	Read Only
icmpOutTimeExcds	1.3.6.1.2.1.5.17.0:0	<b>DWord</b>	Read Only
icmpOutTimestampReps	1.3.6.1.2.1.5.24.0:0	<b>DWord</b>	Read Only
icmpOutTimestamps	1.3.6.1.2.1.5.23.0:0	<b>DWord</b>	Read Only
ifAdminStatus_01	1.3.6.1.2.1.2.2.1.7.1:0	<b>Long</b>	Read/Write
ifDescr_01	1.3.6.1.2.1.2.2.1.2.1:0	<b>String</b>	Read Only
ifIndex_01	1.3.6.1.2.1.2.2.1.1.1:0	<b>Long</b>	Read Only
ifInDiscards_01	1.3.6.1.2.1.2.2.1.13.1:0	<b>DWord</b>	Read Only
ifInErrors_01	1.3.6.1.2.1.2.2.1.14.1:0	<b>DWord</b>	Read Only
ifInNUcastPkts_01	1.3.6.1.2.1.2.2.1.12.1:0	<b>DWord</b>	Read Only
ifInOctets_01	1.3.6.1.2.1.2.2.1.10.1:0	<b>DWord</b>	Read Only
ifInUcastPkts_01	1.3.6.1.2.1.2.2.1.11.1:0	<b>DWord</b>	Read Only
ifInUnknownProtos_01	1.3.6.1.2.1.2.2.1.15.1:0	<b>DWord</b>	Read Only
ifLastChange_01	1.3.6.1.2.1.2.2.1.9.1:0	<b>DWord</b>	Read Only
ifMtu_01	1.3.6.1.2.1.2.2.1.4.1:0	<b>Long</b>	Read Only

ifNumber	1.3.6.1.2.1.2.1.0:0	<b>Long</b>	Read Only
ifOperStatus_01	1.3.6.1.2.1.2.2.1.8.1:0	<b>Long</b>	Read Only
ifOutDiscards_01	1.3.6.1.2.1.2.2.1.19.1:0	<b>DWord</b>	Read Only
ifOutErrors_01	1.3.6.1.2.1.2.2.1.20.1:0	<b>DWord</b>	Read Only
ifOutNUcastPkts_01	1.3.6.1.2.1.2.2.1.18.1:0	<b>DWord</b>	Read Only
ifOutOctets_01	1.3.6.1.2.1.2.2.1.16.1:0	<b>DWord</b>	Read Only
ifOutQLen_01	1.3.6.1.2.1.2.2.1.21.1:0	<b>DWord</b>	Read Only
ifOutUcastPkts_01	1.3.6.1.2.1.2.2.1.17.1:0	<b>DWord</b>	Read Only
ifPhysAddress_01	1.3.6.1.2.1.2.2.1.6.1:0	<b>String</b>	Read Only
ifSpecific_01	1.3.6.1.2.1.2.2.1.22.1:0	<b>String</b>	Read Only
ifSpeed_01	1.3.6.1.2.1.2.2.1.5.1:0	<b>DWord</b>	Read Only
ifType_01	1.3.6.1.2.1.2.2.1.3.1:0	<b>Long</b>	Read Only
ipAdEntAddr_01	1.3.6.1.2.1.4.20.1.1:1	<b>String</b>	Read Only
ipAdEntBcastAddr_01	1.3.6.1.2.1.4.20.1.4:1	<b>Long</b>	Read Only
ipAdEntIfIndex_01	1.3.6.1.2.1.4.20.1.2:1	<b>Long</b>	Read Only
ipAdEntNetMask_01	1.3.6.1.2.1.4.20.1.3:1	<b>String</b>	Read Only
ipAdEntReasmMaxSize_01	1.3.6.1.2.1.4.20.1.5:1	<b>Long</b>	Read Only
ipDefaultTTL	1.3.6.1.2.1.4.2.0:0	<b>Long</b>	Read/Write
ipForwarding	1.3.6.1.2.1.4.1.0:0	<b>Long</b>	Read/Write
ipForwDatagrams	1.3.6.1.2.1.4.6.0:0	<b>DWord</b>	Read Only
ipFragCreates	1.3.6.1.2.1.4.19.0:0	<b>DWord</b>	Read Only
ipFragFails	1.3.6.1.2.1.4.18.0:0	<b>DWord</b>	Read Only
ipFragOKs	1.3.6.1.2.1.4.17.0:0	<b>DWord</b>	Read Only
ipInAddrErrors	1.3.6.1.2.1.4.5.0:0	<b>DWord</b>	Read Only
ipInDelivers	1.3.6.1.2.1.4.9.0:0	<b>DWord</b>	Read Only
ipInDiscards	1.3.6.1.2.1.4.8.0:0	<b>DWord</b>	Read Only
ipInHdrErrors	1.3.6.1.2.1.4.4.0:0	<b>DWord</b>	Read Only
ipInReceives	1.3.6.1.2.1.4.3.0:0	<b>DWord</b>	Read Only
ipInUnknownProtos	1.3.6.1.2.1.4.7.0:0	<b>DWord</b>	Read Only
ipNetToMediaIfIndex_01	1.3.6.1.2.1.4.22.1.1:1	<b>Long</b>	Read/Write
ipNetToMediaNetAddress_01	1.3.6.1.2.1.4.22.1.3:1	<b>String</b>	Read/Write
ipNetToMediaPhysAddress_01	1.3.6.1.2.1.4.22.1.2:1	<b>String</b>	Read/Write
ipNetToMediaType_01	1.3.6.1.2.1.4.22.1.4:1	<b>Long</b>	Read/Write
ipOutDiscards	1.3.6.1.2.1.4.11.0:0	<b>DWord</b>	Read Only
ipOutNoRoutes	1.3.6.1.2.1.4.12.0:0	<b>DWord</b>	Read Only
ipOutRequests	1.3.6.1.2.1.4.10.0:0	<b>DWord</b>	Read Only
ipReasmFails	1.3.6.1.2.1.4.16.0:0	<b>DWord</b>	Read Only
ipReasmOKs	1.3.6.1.2.1.4.15.0:0	<b>DWord</b>	Read Only
ipReasmReqds	1.3.6.1.2.1.4.14.0:0	<b>DWord</b>	Read Only
ipReasmTimeout	1.3.6.1.2.1.4.13.0:0	<b>Long</b>	Read Only
ipRouteAge_01	1.3.6.1.2.1.4.21.1.10:1	<b>Long</b>	Read/Write
ipRouteDest_01	1.3.6.1.2.1.4.21.1.1:1	<b>String</b>	Read/Write
ipRouteIfIndex_01	1.3.6.1.2.1.4.21.1.2:1	<b>Long</b>	Read/Write
ipRouteInfo_01	1.3.6.1.2.1.4.21.1.13:1	<b>String</b>	Read Only
ipRouteMask_01	1.3.6.1.2.1.4.21.1.11:1	<b>String</b>	Read/Write
ipRouteMetric1_01	1.3.6.1.2.1.4.21.1.3:1	<b>Long</b>	Read/Write
ipRouteMetric2_01	1.3.6.1.2.1.4.21.1.4:1	<b>Long</b>	Read/Write
ipRouteMetric3_01	1.3.6.1.2.1.4.21.1.5:1	<b>Long</b>	Read/Write

ipRouteMetric4_01	1.3.6.1.2.1.4.21.1.6:1	<b>Long</b>	Read/Write
ipRouteMetric5_01	1.3.6.1.2.1.4.21.1.12:1	<b>Long</b>	Read/Write
ipRouteNextHop_01	1.3.6.1.2.1.4.21.1.7:1	<b>String</b>	Read/Write
ipRouteProto_01	1.3.6.1.2.1.4.21.1.9:1	<b>Long</b>	Read Only
ipRouteType_01	1.3.6.1.2.1.4.21.1.8:1	<b>Long</b>	Read/Write
ipRoutingDiscards	1.3.6.1.2.1.4.23.0:0	<b>DWord</b>	Read Only
snmpEnableAuthenTraps	1.3.6.1.2.1.11.30.0:0	<b>Long</b>	Read/Write
snmpInASNParseErrs	1.3.6.1.2.1.11.6.0:0	<b>DWord</b>	Read Only
snmpInBadCommunityNames	1.3.6.1.2.1.11.4.0:0	<b>DWord</b>	Read Only
snmpInBadCommunityUses	1.3.6.1.2.1.11.5.0:0	<b>DWord</b>	Read Only
snmpInBadValues	1.3.6.1.2.1.11.10.0:0	<b>DWord</b>	Read Only
snmpInBadVersions	1.3.6.1.2.1.11.3.0:0	<b>DWord</b>	Read Only
snmpInGenErrs	1.3.6.1.2.1.11.12.0:0	<b>DWord</b>	Read Only
snmpInGetNexts	1.3.6.1.2.1.11.16.0:0	<b>DWord</b>	Read Only
snmpInGetRequests	1.3.6.1.2.1.11.15.0:0	<b>DWord</b>	Read Only
snmpInGetResponses	1.3.6.1.2.1.11.18.0:0	<b>DWord</b>	Read Only
snmpInNoSuchNames	1.3.6.1.2.1.11.9.0:0	<b>DWord</b>	Read Only
snmpInPkts	1.3.6.1.2.1.11.1.0:0	<b>DWord</b>	Read Only
snmpInReadOnlys	1.3.6.1.2.1.11.11.0:0	<b>DWord</b>	Read Only
snmpInSetRequests	1.3.6.1.2.1.11.17.0:0	<b>DWord</b>	Read Only
snmpInTooBig	1.3.6.1.2.1.11.8.0:0	<b>DWord</b>	Read Only
snmpInTotalReqVars	1.3.6.1.2.1.11.13.0:0	<b>DWord</b>	Read Only
snmpInTotalSetVars	1.3.6.1.2.1.11.14.0:0	<b>DWord</b>	Read Only
snmpInTraps	1.3.6.1.2.1.11.19.0:0	<b>DWord</b>	Read Only
snmpOutBadValues	1.3.6.1.2.1.11.22.0:0	<b>DWord</b>	Read Only
snmpOutGenErrs	1.3.6.1.2.1.11.24.0:0	<b>DWord</b>	Read Only
snmpOutGetNexts	1.3.6.1.2.1.11.26.0:0	<b>DWord</b>	Read Only
snmpOutGetRequests	1.3.6.1.2.1.11.25.0:0	<b>DWord</b>	Read Only
snmpOutGetResponses	1.3.6.1.2.1.11.28.0:0	<b>DWord</b>	Read Only
snmpOutNoSuchNames	1.3.6.1.2.1.11.21.0:0	<b>DWord</b>	Read Only
snmpOutPkts	1.3.6.1.2.1.11.2.0:0	<b>DWord</b>	Read Only
snmpOutSetRequests	1.3.6.1.2.1.11.27.0:0	<b>DWord</b>	Read Only
snmpOutTooBig	1.3.6.1.2.1.11.20.0:0	<b>DWord</b>	Read Only
snmpOutTraps	1.3.6.1.2.1.11.29.0:0	<b>DWord</b>	Read Only
sysContact	1.3.6.1.2.1.1.4.0:0	<b>String</b>	Read/Write
sysDescr	1.3.6.1.2.1.1.1.0:0	<b>String</b>	Read Only
sysLocation	1.3.6.1.2.1.1.6.0:0	<b>String</b>	Read/Write
sysName	1.3.6.1.2.1.1.5.0:0	<b>String</b>	Read/Write
sysObjectID	1.3.6.1.2.1.1.2.0:0	<b>String</b>	Read Only
sysServices	1.3.6.1.2.1.1.7.0:0	<b>Long</b>	Read Only
sysUpTime	1.3.6.1.2.1.1.3.0:0	<b>DWord</b>	Read Only
tcpActiveOpens	1.3.6.1.2.1.6.5.0:0	<b>DWord</b>	Read Only
tcpAttemptFails	1.3.6.1.2.1.6.7.0:0	<b>DWord</b>	Read Only
tcpConnLocalAddress_01	1.3.6.1.2.1.6.13.1.2:1	<b>String</b>	Read Only
tcpConnLocalPort_01	1.3.6.1.2.1.6.13.1.3:1	<b>Long</b>	Read Only
tcpConnRemAddress_01	1.3.6.1.2.1.6.13.1.4:1	<b>String</b>	Read Only
tcpConnRemPort_01	1.3.6.1.2.1.6.13.1.5:1	<b>Long</b>	Read Only
tcpConnState_01	1.3.6.1.2.1.6.13.1.1:1	<b>Long</b>	Read/Write

tcpCurrEstab	1.3.6.1.2.1.6.9.0:0	<b>DWord</b>	Read Only
tcpEstabResets	1.3.6.1.2.1.6.8.0:0	<b>DWord</b>	Read Only
tcpInErrs	1.3.6.1.2.1.6.14.0:0	<b>DWord</b>	Read Only
tcpInSegs	1.3.6.1.2.1.6.10.0:0	<b>DWord</b>	Read Only
tcpMaxConn	1.3.6.1.2.1.6.4.0:0	<b>Long</b>	Read Only
tcpOutRsts	1.3.6.1.2.1.6.15.0:0	<b>DWord</b>	Read Only
tcpOutSegs	1.3.6.1.2.1.6.11.0:0	<b>DWord</b>	Read Only
tcpPassiveOpens	1.3.6.1.2.1.6.6.0:0	<b>DWord</b>	Read Only
tcpRetransSegs	1.3.6.1.2.1.6.12.0:0	<b>DWord</b>	Read Only
tcpRtoAlgorithm	1.3.6.1.2.1.6.1.0:0	<b>Long</b>	Read Only
tcpRtoMax	1.3.6.1.2.1.6.3.0:0	<b>Long</b>	Read Only
tcpRtoMin	1.3.6.1.2.1.6.2.0:0	<b>Long</b>	Read Only
udpInDatagrams	1.3.6.1.2.1.7.1.0:0	<b>DWord</b>	Read Only
udpInErrors	1.3.6.1.2.1.7.3.0:0	<b>DWord</b>	Read Only
udpLocalAddress_01	1.3.6.1.2.1.7.5.1.1:1	<b>String</b>	Read Only
udpLocalPort_01	1.3.6.1.2.1.7.5.1.2:1	<b>Long</b>	Read Only
udpNoPorts	1.3.6.1.2.1.7.2.0:0	<b>DWord</b>	Read Only
udpOutDatagrams	1.3.6.1.2.1.7.4.0:0	<b>DWord</b>	Read Only
egpOutMsgs	1.3.6.1.2.1.8.3.0:0	<b>DWord</b>	Read Only
sysTrap	1.3.6.1.2.1.11:TV	<b>Long</b>	Read Only

**Group: UPSATSCALIB**

Tag Name	Object ID	Data Type	Access
Calibration.atsCalibrationNumInputPhases	1.3.6.1.4.1.318.1.1.8.2.1.2.0:0	<b>Long</b>	Read Only
Calibration.atsCalibrationNumInputs	1.3.6.1.4.1.318.1.1.8.2.1.1.0:0	<b>Long</b>	Read Only
Calibration.atsCalibrationNumOutputPhases	1.3.6.1.4.1.318.1.1.8.2.3.2.0:0	<b>Long</b>	Read Only
Calibration.atsCalibrationNumOutputs	1.3.6.1.4.1.318.1.1.8.2.3.1.0:0	<b>Long</b>	Read Only
Calibration.atsCalibrationPowerSupplyVoltages	1.3.6.1.4.1.318.1.1.8.2.2.1.0:0	<b>Long</b>	Read Only

**Group: UPSATSCNFG**

Tag Name	Object ID	Data Type	Access
Config.atsConfigCurrentLimit	1.3.6.1.4.1.318.1.1.8.4.6.0:0	<b>Long</b>	Read/Write
Config.atsConfigFrontPanelLockout	1.3.6.1.4.1.318.1.1.8.4.3.0:0	<b>Long</b>	Read/Write
Config.atsConfigPreferredSource	1.3.6.1.4.1.318.1.1.8.4.2.0:0	<b>Long</b>	Read/Write
Config.atsConfigProductName	1.3.6.1.4.1.318.1.1.8.4.1.0:0	<b>String</b>	Read/Write
Config.atsConfigResetValues	1.3.6.1.4.1.318.1.1.8.4.7.0:0	<b>Long</b>	Read/Write
Config.atsConfigTransferVoltageRange	1.3.6.1.4.1.318.1.1.8.4.5.0:0	<b>Long</b>	Read/Write
Config.atsConfigVoltageSensitivity	1.3.6.1.4.1.318.1.1.8.4.4.0:0	<b>Long</b>	Read/Write

**Group: UPSATSCNTRL**

Tag Name	Object ID	Data Type	Access
Control.atsControlClearAllAlarms	1.3.6.1.4.1.318.1.1.8.3.2.0:0	<b>Long</b>	Read/Write
Control.atsControlResetATS	1.3.6.1.4.1.318.1.1.8.3.1.0:0	<b>Long</b>	Read/Write

**Group: UPSATSSSTATUS**

Tag Name	Object ID	Data Type	Access
Status.atsStatus24VPowerSupply	1.3.6.1.4.1.318.1.1.8.5.1.6.0:0	<b>Long</b>	Read Only
Status.atsStatus5VPowerSupply	1.3.6.1.4.1.318.1.1.8.5.1.5.0:0	<b>Long</b>	Read Only
Status.atsStatusCommStatus	1.3.6.1.4.1.318.1.1.8.5.1.1.0:0	<b>Long</b>	Read Only

Status.atsStatusOverCurrentState	1.3.6.1.4.1.318.1.1.8.5.1.4.0:0	<b>Long</b>	Read Only
Status.atsStatusRedundancyState	1.3.6.1.4.1.318.1.1.8.5.1.3.0:0	<b>Long</b>	Read Only
Status.atsStatusResetMaxMinValues	1.3.6.1.4.1.318.1.1.8.5.2.1.0:0	<b>Long</b>	Read/Write
Status.atsStatusSelectedSource	1.3.6.1.4.1.318.1.1.8.5.1.2.0:0	<b>Long</b>	Read Only

**Group: UPSBATTERY**

Tag Name	Object ID	Data Type	Access
upsAdvBatteryCapacity	1.3.6.1.4.1.318.1.1.1.2.2.1.0:0	<b>DWord</b>	Read Only
upsAdvBatteryNumOfBadBattPacks	1.3.6.1.4.1.318.1.1.1.2.2.6.0:0	<b>Long</b>	Read Only
upsAdvBatteryNumOfBattPacks	1.3.6.1.4.1.318.1.1.1.2.2.5.0:0	<b>Long</b>	Read Only
upsAdvBatteryReplaceIndicator	1.3.6.1.4.1.318.1.1.1.2.2.4.0:0	<b>Long</b>	Read Only
upsAdvBatteryRunTimeRemaining	1.3.6.1.4.1.318.1.1.1.2.2.3.0:0	<b>DWord</b>	Read Only
upsAdvBatteryTemperature	1.3.6.1.4.1.318.1.1.1.2.2.2.0:0	<b>DWord</b>	Read Only
upsBasicBatteryLastReplaceDATE	1.3.6.1.4.1.318.1.1.1.2.1.3.0:0	<b>String</b>	Read/Write
upsBasicBatteryStatus	1.3.6.1.4.1.318.1.1.1.2.1.1.0:0	<b>Long</b>	Read Only
upsBasicBatteryTimeOnBattery	1.3.6.1.4.1.318.1.1.1.2.1.2.0:0	<b>DWord</b>	Read Only

**Group: UPSCNFGADV**

Tag Name	Object ID	Data Type	Access
Advanced.apcUpsConfigFieldIndex_01	1.3.6.1.4.1.318.1.1.1.5.2.16.1.1:1	<b>Long</b>	Read Only
Advanced.apcUpsConfigFieldIndex_02	1.3.6.1.4.1.318.1.1.1.5.2.16.1.1:2	<b>Long</b>	Read Only
Advanced.apcUpsConfigFieldIndex_03	1.3.6.1.4.1.318.1.1.1.5.2.16.1.1:3	<b>Long</b>	Read Only
Advanced.apcUpsConfigFieldIndex_04	1.3.6.1.4.1.318.1.1.1.5.2.16.1.1:4	<b>Long</b>	Read Only
Advanced.apcUpsConfigFieldIndex_05	1.3.6.1.4.1.318.1.1.1.5.2.16.1.1:5	<b>Long</b>	Read Only
Advanced.apcUpsConfigFieldIndex_06	1.3.6.1.4.1.318.1.1.1.5.2.16.1.1:6	<b>Long</b>	Read Only
Advanced.apcUpsConfigFieldIndex_07	1.3.6.1.4.1.318.1.1.1.5.2.16.1.1:7	<b>Long</b>	Read Only
Advanced.apcUpsConfigFieldIndex_08	1.3.6.1.4.1.318.1.1.1.5.2.16.1.1:8	<b>Long</b>	Read Only
Advanced.apcUpsConfigFieldIndex_09	1.3.6.1.4.1.318.1.1.1.5.2.16.1.1:9	<b>Long</b>	Read Only
Advanced.apcUpsConfigFieldOID_01	1.3.6.1.4.1.318.1.1.1.5.2.16.1.2:1	<b>String</b>	Read Only
Advanced.apcUpsConfigFieldOID_02	1.3.6.1.4.1.318.1.1.1.5.2.16.1.2:2	<b>String</b>	Read Only
Advanced.apcUpsConfigFieldOID_03	1.3.6.1.4.1.318.1.1.1.5.2.16.1.2:3	<b>String</b>	Read Only
Advanced.apcUpsConfigFieldOID_04	1.3.6.1.4.1.318.1.1.1.5.2.16.1.2:4	<b>String</b>	Read Only
Advanced.apcUpsConfigFieldOID_05	1.3.6.1.4.1.318.1.1.1.5.2.16.1.2:5	<b>String</b>	Read Only
Advanced.apcUpsConfigFieldOID_06	1.3.6.1.4.1.318.1.1.1.5.2.16.1.2:6	<b>String</b>	Read Only
Advanced.apcUpsConfigFieldOID_07	1.3.6.1.4.1.318.1.1.1.5.2.16.1.2:7	<b>String</b>	Read Only
Advanced.apcUpsConfigFieldOID_08	1.3.6.1.4.1.318.1.1.1.5.2.16.1.2:8	<b>String</b>	Read Only
Advanced.apcUpsConfigFieldOID_09	1.3.6.1.4.1.318.1.1.1.5.2.16.1.2:9	<b>String</b>	Read Only
Advanced.apcUpsConfigFieldValueRange_01	1.3.6.1.4.1.318.1.1.1.5.2.16.1.3:1	<b>String</b>	Read Only
Advanced.apcUpsConfigFieldValueRange_02	1.3.6.1.4.1.318.1.1.1.5.2.16.1.3:2	<b>String</b>	Read Only
Advanced.apcUpsConfigFieldValueRange_03	1.3.6.1.4.1.318.1.1.1.5.2.16.1.3:3	<b>String</b>	Read Only
Advanced.apcUpsConfigFieldValueRange_04	1.3.6.1.4.1.318.1.1.1.5.2.16.1.3:4	<b>String</b>	Read Only
Advanced.apcUpsConfigFieldValueRange_05	1.3.6.1.4.1.318.1.1.1.5.2.16.1.3:5	<b>String</b>	Read Only
Advanced.apcUpsConfigFieldValueRange_06	1.3.6.1.4.1.318.1.1.1.5.2.16.1.3:6	<b>String</b>	Read Only
Advanced.apcUpsConfigFieldValueRange_07	1.3.6.1.4.1.318.1.1.1.5.2.16.1.3:7	<b>String</b>	Read Only
Advanced.apcUpsConfigFieldValueRange_08	1.3.6.1.4.1.318.1.1.1.5.2.16.1.3:8	<b>String</b>	Read Only
Advanced.apcUpsConfigFieldValueRange_09	1.3.6.1.4.1.318.1.1.1.5.2.16.1.3:9	<b>String</b>	Read Only
Advanced.dipSwitchIndex_01	1.3.6.1.4.1.318.1.1.1.5.2.13.1.1:1	<b>Long</b>	Read Only
Advanced.dipSwitchStatus_01	1.3.6.1.4.1.318.1.1.1.5.2.13.1.2:1	<b>Long</b>	Read Only

Advanced.upsAdvConfigAlarm	1.3.6.1.4.1.318.1.1.1.5.2.4.0:0	Long	Read/Write
Advanced.upsAdvConfigAlarmLoadOver	1.3.6.1.4.1.318.1.1.1.5.2.22.0:0	Long	Read/Write
Advanced.upsAdvConfigAlarmRedundancy	1.3.6.1.4.1.318.1.1.1.5.2.21.0:0	Long	Read/Write
Advanced.upsAdvConfigAlarmRuntimeUnder	1.3.6.1.4.1.318.1.1.1.5.2.23.0:0	Long	Read/Write
Advanced.upsAdvConfigAlarmTimer	1.3.6.1.4.1.318.1.1.1.5.2.5.0:0	DWord	Read/Write
Advanced.upsAdvConfigBattCabAmpHour	1.3.6.1.4.1.318.1.1.1.5.2.17.0:0	Long	Read/Write
Advanced.upsAdvConfigBattExhaustThresh	1.3.6.1.4.1.318.1.1.1.5.2.14.0:0	DWord	Read/Write
Advanced.upsAdvConfigHighTransferVolt	1.3.6.1.4.1.318.1.1.1.5.2.2.0:0	Long	Read/Write
Advanced.upsAdvConfigLowBatteryRunTime	1.3.6.1.4.1.318.1.1.1.5.2.8.0:0	DWord	Read/Write
Advanced.upsAdvConfigLowTransferVolt	1.3.6.1.4.1.318.1.1.1.5.2.3.0:0	Long	Read/Write
Advanced.upsAdvConfigMinReturnCapacity	1.3.6.1.4.1.318.1.1.1.5.2.6.0:0	Long	Read/Write
Advanced.upsAdvConfigOutputFreqRange	1.3.6.1.4.1.318.1.1.1.5.2.19.0:0	Long	Read/Write
Advanced.upsAdvConfigPassword	1.3.6.1.4.1.318.1.1.1.5.2.15.0:0	String	Read/Write
Advanced.upsAdvConfigPositionSelector	1.3.6.1.4.1.318.1.1.1.5.2.18.0:0	Long	Read/Write
Advanced.upsAdvConfigRatedOutputVoltage	1.3.6.1.4.1.318.1.1.1.5.2.1.0:0	Long	Read/Write
Advanced.upsAdvConfigReturnDelay	1.3.6.1.4.1.318.1.1.1.5.2.9.0:0	DWord	Read/Write
Advanced.upsAdvConfigSensitivity	1.3.6.1.4.1.318.1.1.1.5.2.7.0:0	Long	Read/Write
Advanced.upsAdvConfigSetEEPROMDefaults	1.3.6.1.4.1.318.1.1.1.5.2.12.0:0	Long	Read/Write
Advanced.upsAdvConfigShutoffDelay	1.3.6.1.4.1.318.1.1.1.5.2.10.0:0	DWord	Read/Write
Advanced.upsAdvConfigUPSFail	1.3.6.1.4.1.318.1.1.1.5.2.20.0:0	Long	Read/Write
Advanced.upsAdvConfigUpsSleepTime	1.3.6.1.4.1.318.1.1.1.5.2.11.0:0	DWord	Read/Write
Advanced.upsAdvConfigVoutReporting	1.3.6.1.4.1.318.1.1.1.5.2.24.0:0	Long	Read/Write

**Group: UPSCNFGBASIC**

Tag Name	Object ID	Data Type	Access
Basic.acceptThisDevice_01	1.3.6.1.4.1.318.1.1.1.5.1.2.1.4:1	Long	Read/Write
Basic.acceptThisDevice_02	1.3.6.1.4.1.318.1.1.1.5.1.2.1.4:2	Long	Read/Write
Basic.acceptThisDevice_03	1.3.6.1.4.1.318.1.1.1.5.1.2.1.4:3	Long	Read/Write
Basic.acceptThisDevice_04	1.3.6.1.4.1.318.1.1.1.5.1.2.1.4:4	Long	Read/Write
Basic.deviceIndex_01	1.3.6.1.4.1.318.1.1.1.5.1.2.1.1:1	Long	Read Only
Basic.deviceIndex_02	1.3.6.1.4.1.318.1.1.1.5.1.2.1.1:2	Long	Read Only
Basic.deviceIndex_03	1.3.6.1.4.1.318.1.1.1.5.1.2.1.1:3	Long	Read Only
Basic.deviceIndex_04	1.3.6.1.4.1.318.1.1.1.5.1.2.1.1:4	Long	Read Only
Basic.deviceName_01	1.3.6.1.4.1.318.1.1.1.5.1.2.1.2:1	String	Read/Write
Basic.deviceName_02	1.3.6.1.4.1.318.1.1.1.5.1.2.1.2:2	String	Read/Write
Basic.deviceName_03	1.3.6.1.4.1.318.1.1.1.5.1.2.1.2:3	String	Read/Write
Basic.deviceName_04	1.3.6.1.4.1.318.1.1.1.5.1.2.1.2:4	String	Read/Write
Basic.upsBasicConfigNumDevices	1.3.6.1.4.1.318.1.1.1.5.1.1.0:0	Long	Read Only
Basic.vaRating_01	1.3.6.1.4.1.318.1.1.1.5.1.2.1.3:1	Long	Read/Write
Basic.vaRating_02	1.3.6.1.4.1.318.1.1.1.5.1.2.1.3:2	Long	Read/Write
Basic.vaRating_03	1.3.6.1.4.1.318.1.1.1.5.1.2.1.3:3	Long	Read/Write
Basic.vaRating_04	1.3.6.1.4.1.318.1.1.1.5.1.2.1.3:4	Long	Read/Write

**Group: UPSCONTROL**

Tag Name	Object ID	Data Type	Access
upsAdvControlBypassSwitch	1.3.6.1.4.1.318.1.1.1.6.2.7.0:0	Long	Read/Write
upsAdvControlFlashAndBeep	1.3.6.1.4.1.318.1.1.1.6.2.5.0:0	Long	Read/Write
upsAdvControlRebootUps	1.3.6.1.4.1.318.1.1.1.6.2.2.0:0	Long	Read/Write

upsAdvControlSimulatePowerFail	1.3.6.1.4.1.318.1.1.1.6.2.4.0:0	Long	Read/Write
upsAdvControlTurnOnUPS	1.3.6.1.4.1.318.1.1.1.6.2.6.0:0	Long	Read/Write
upsAdvControlUpsOff	1.3.6.1.4.1.318.1.1.1.6.2.1.0:0	Long	Read/Write
upsAdvControlUpsSleep	1.3.6.1.4.1.318.1.1.1.6.2.3.0:0	Long	Read/Write
upsBasicControlConserveBattery	1.3.6.1.4.1.318.1.1.1.6.1.1.0:0	Long	Read/Write

**Group: UPSDCMIM2**

Tag Name	Object ID	Data Type	Access
dcmim2IdentSysFWVersion	1.3.6.1.4.1.318.1.1.9.1.1.1.0:0	Long	Read Only

**Group: UPSDCMIM2CNFG**

Tag Name	Object ID	Data Type	Access
Config.dcmim2ConfigBattCapacityTestCurrent	1.3.6.1.4.1.318.1.1.9.3.2.9.0:0	Long	Read/Write
Config.dcmim2ConfigBattCapacityTestEndThresh	1.3.6.1.4.1.318.1.1.9.3.2.8.0:0	Long	Read/Write
Config.dcmim2ConfigBattCapacityTestPercent	1.3.6.1.4.1.318.1.1.9.3.2.7.0:0	Long	Read/Write
Config.dcmim2ConfigBattFloatVolt	1.3.6.1.4.1.318.1.1.9.3.2.1.0:0	Long	Read/Write
Config.dcmim2ConfigBattFunctTestDuration	1.3.6.1.4.1.318.1.1.9.3.2.5.0:0	Long	Read/Write
Config.dcmim2ConfigBattFunctTestThresh	1.3.6.1.4.1.318.1.1.9.3.2.6.0:0	Long	Read/Write
Config.dcmim2ConfigBattMaxRecharge	1.3.6.1.4.1.318.1.1.9.3.2.2.0:0	Long	Read/Write
Config.dcmim2ConfigBattMfgCapacity	1.3.6.1.4.1.318.1.1.9.3.2.3.0:0	Long	Read/Write
Config.dcmim2ConfigBattType	1.3.6.1.4.1.318.1.1.9.3.2.4.0:0	Long	Read/Write
Config.dcmim2ConfigLVDTableSize	1.3.6.1.4.1.318.1.1.9.3.3.1.0:0	Long	Read Only
Config.dcmim2ConfigSysHighTempReset	1.3.6.1.4.1.318.1.1.9.3.1.2.0:0	Long	Read/Write
Config.dcmim2ConfigSysHighTempTrip	1.3.6.1.4.1.318.1.1.9.3.1.1.0:0	Long	Read/Write
Config.dcmim2ConfigSysLowTempReset	1.3.6.1.4.1.318.1.1.9.3.1.4.0:0	Long	Read/Write
Config.dcmim2ConfigSysLowTempTrip	1.3.6.1.4.1.318.1.1.9.3.1.3.0:0	Long	Read/Write

**Group: UPSDCMIM2CTRL**

Tag Name	Object ID	Data Type	Access
Control.dcmim2ControlRunCapacityBatteryTest	1.3.6.1.4.1.318.1.1.9.2.1.2.0:0	Long	Read/Write
Control.dcmim2ControlRunFunctBatteryTest	1.3.6.1.4.1.318.1.1.9.2.1.1.0:0	Long	Read/Write

**Group: UPSDCMIM2STATUS**

Tag Name	Object ID	Data Type	Access
Status.dcmim2StatusAlarmsTableSize	1.3.6.1.4.1.318.1.1.9.4.5.1.0:0	Long	Read Only
Status.dcmim2StatusBattCapacityTestResult	1.3.6.1.4.1.318.1.1.9.4.3.7.0:0	Long	Read Only
Status.dcmim2StatusBattCurrent	1.3.6.1.4.1.318.1.1.9.4.3.2.0:0	Long	Read Only
Status.dcmim2StatusBattFloatVolt	1.3.6.1.4.1.318.1.1.9.4.3.1.0:0	Long	Read Only
Status.dcmim2StatusBattFunctTestResult	1.3.6.1.4.1.318.1.1.9.4.3.6.0:0	Long	Read Only
Status.dcmim2StatusBattMfgCapacity	1.3.6.1.4.1.318.1.1.9.4.3.4.0:0	Long	Read Only
Status.dcmim2StatusBattTemp	1.3.6.1.4.1.318.1.1.9.4.3.3.0:0	Long	Read Only
Status.dcmim2StatusBattTestCapacity	1.3.6.1.4.1.318.1.1.9.4.3.5.0:0	Long	Read Only
Status.dcmim2StatusLVDTableSize	1.3.6.1.4.1.318.1.1.9.4.4.1.0:0	Long	Read Only
Status.dcmim2StatusRectTableSize	1.3.6.1.4.1.318.1.1.9.4.2.1.0:0	Long	Read Only
Status.dcmim2StatusSysAmbientTemp	1.3.6.1.4.1.318.1.1.9.4.1.4.0:0	Long	Read Only
Status.dcmim2StatusSysBusVoltage	1.3.6.1.4.1.318.1.1.9.4.1.3.0:0	Long	Read Only
Status.dcmim2StatusSysLoadCurrent	1.3.6.1.4.1.318.1.1.9.4.1.2.0:0	Long	Read Only
Status.dcmim2StatusSysRectCurrent	1.3.6.1.4.1.318.1.1.9.4.1.1.0:0	Long	Read Only
Status.dcmim2StatusSysTempUnits	1.3.6.1.4.1.318.1.1.9.4.1.6.0:0	Long	Read Only

Status.dcmim2StatusSysUpTime	1.3.6.1.4.1.318.1.1.9.4.1.5.0:0	String	Read Only
------------------------------	---------------------------------	--------	-----------

**Group: UPSDIAG**

Tag Name	Object ID	Data Type	Access
upsDiagBatteryTableSize	1.3.6.1.4.1.318.1.1.1.13.3.1.0:0	Long	Read Only
upsDiagIMTableSize	1.3.6.1.4.1.318.1.1.1.13.1.1.0:0	Long	Read Only
upsDiagPMTTableSize	1.3.6.1.4.1.318.1.1.1.13.2.1.0:0	Long	Read Only

**Groups: UPSDIAGCOMM**

Tag Name	Object ID	Data Type	Access
upsDiagComBusExternalMIMStatus	1.3.6.1.4.1.318.1.1.1.13.6.4.0:0	Long	Read Only
upsDiagComBusExternalRIMStatus	1.3.6.1.4.1.318.1.1.1.13.6.5.0:0	Long	Read Only
upsDiagComBusInternalMIMStatus	1.3.6.1.4.1.318.1.1.1.13.6.1.0:0	Long	Read Only
upsDiagComBusInternalRIMStatus	1.3.6.1.4.1.318.1.1.1.13.6.2.0:0	Long	Read Only
upsDiagComBusMIMtoRIMStatus	1.3.6.1.4.1.318.1.1.1.13.6.3.0:0	Long	Read Only

**Groups: UPSDIAGEXT**

Tag Name	Object ID	Data Type	Access
upsDiagMCCBBoxStatus	1.3.6.1.4.1.318.1.1.1.13.5.2.1.0:0	Long	Read Only
upsDiagSwitchGearBypassSwitchStatus	1.3.6.1.4.1.318.1.1.1.13.5.1.4.0:0	Long	Read Only
upsDiagSwitchGearInputSwitchStatus	1.3.6.1.4.1.318.1.1.1.13.5.1.2.0:0	Long	Read Only
upsDiagSwitchGearOutputSwitchStatus	1.3.6.1.4.1.318.1.1.1.13.5.1.3.0:0	Long	Read Only
upsDiagSwitchGearStatus	1.3.6.1.4.1.318.1.1.1.13.5.1.1.0:0	Long	Read Only
upsDiagTransformerStatus	1.3.6.1.4.1.318.1.1.1.13.5.3.1.0:0	Long	Read Only

**Groups: UPSDIAGSUB**

Tag Name	Object ID	Data Type	Access
upsDiagSubSysBattMonitorTableSize	1.3.6.1.4.1.318.1.1.1.13.4.5.0:0	Long	Read Only
upsDiagSubSysChargerTableSize	1.3.6.1.4.1.318.1.1.1.13.4.19.0:0	Long	Read Only
upsDiagSubSysDCCircuitBreakerTableSize	1.3.6.1.4.1.318.1.1.1.13.4.11.0:0	Long	Read Only
upsDiagSubSysDisplayInterfaceCardTableSize	1.3.6.1.4.1.318.1.1.1.13.4.9.0:0	Long	Read Only
upsDiagSubSysExternalPowerFrameBoardTableSize	1.3.6.1.4.1.318.1.1.1.13.4.17.0:0	Long	Read Only
upsDiagSubSysExternalSwitchGearTableSize	1.3.6.1.4.1.318.1.1.1.13.4.7.0:0	Long	Read Only
upsDiagSubSysFrameTableSize	1.3.6.1.4.1.318.1.1.1.13.4.1.0:0	Long	Read Only
upsDiagSubSysIntBySwitchTableSize	1.3.6.1.4.1.318.1.1.1.13.4.3.0:0	Long	Read Only
upsDiagSubSysSystemPowerSupplyTableSize	1.3.6.1.4.1.318.1.1.1.13.4.13.0:0	Long	Read Only
upsDiagSubSysXRCommunicationCardTableSize	1.3.6.1.4.1.318.1.1.1.13.4.15.0:0	Long	Read Only

**Groups: UPSDM3CNFG**

Tag Name	Object ID	Data Type	Access
Config.dm3ConfigBattAmpHour	1.3.6.1.4.1.318.1.1.7.2.3.13.0:0	Long	Read/Write
Config.dm3ConfigBattDischargeAlarm	1.3.6.1.4.1.318.1.1.7.2.3.4.0:0	Long	Read/Write
Config.dm3ConfigBattDischargeThresh	1.3.6.1.4.1.318.1.1.7.2.3.3.0:0	Long	Read/Write
Config.dm3ConfigBattFloatVolt	1.3.6.1.4.1.318.1.1.7.2.3.1.0:0	Long	Read/Write
Config.dm3ConfigBattHighTempAlarm	1.3.6.1.4.1.318.1.1.7.2.3.10.0:0	Long	Read/Write
Config.dm3ConfigBattHighTempThresh	1.3.6.1.4.1.318.1.1.7.2.3.9.0:0	Long	Read/Write
Config.dm3ConfigBattHighVoltAlarm	1.3.6.1.4.1.318.1.1.7.2.3.6.0:0	Long	Read/Write
Config.dm3ConfigBattHighVoltThresh	1.3.6.1.4.1.318.1.1.7.2.3.5.0:0	Long	Read/Write

Config.dm3ConfigBattHwCurrentAlarm	1.3.6.1.4.1.318.1.1.7.2.3.18.0:0	<b>Long</b>	Read/Write
Config.dm3ConfigBattHwTempAlarm	1.3.6.1.4.1.318.1.1.7.2.3.19.0:0	<b>Long</b>	Read/Write
Config.dm3ConfigBattLowTempAlarm	1.3.6.1.4.1.318.1.1.7.2.3.12.0:0	<b>Long</b>	Read/Write
Config.dm3ConfigBattLowTempThresh	1.3.6.1.4.1.318.1.1.7.2.3.11.0:0	<b>Long</b>	Read/Write
Config.dm3ConfigBattLowVoltAlarm	1.3.6.1.4.1.318.1.1.7.2.3.8.0:0	<b>Long</b>	Read/Write
Config.dm3ConfigBattLowVoltThresh	1.3.6.1.4.1.318.1.1.7.2.3.7.0:0	<b>Long</b>	Read/Write
Config.dm3ConfigBattMaxRecharge	1.3.6.1.4.1.318.1.1.7.2.3.2.0:0	<b>Long</b>	Read/Write
Config.dm3ConfigBreakersTableSize	1.3.6.1.4.1.318.1.1.7.2.6.1.1.0:0	<b>Long</b>	Read Only
Config.dm3ConfigCompMethod	1.3.6.1.4.1.318.1.1.7.2.3.14.0:0	<b>Long</b>	Read/Write
Config.dm3ConfigCompTempCoeff	1.3.6.1.4.1.318.1.1.7.2.3.15.0:0	<b>Long</b>	Read/Write
Config.dm3ConfigConv1ofNAlarm	1.3.6.1.4.1.318.1.1.7.2.4.2.2.4.0:0	<b>Long</b>	Read/Write
Config.dm3ConfigConv2ofNAlarm	1.3.6.1.4.1.318.1.1.7.2.4.2.2.5.0:0	<b>Long</b>	Read/Write
Config.dm3ConfigConvConfigAlarm	1.3.6.1.4.1.318.1.1.7.2.4.2.2.3.0:0	<b>Long</b>	Read/Write
Config.dm3ConfigConvCurrLimitAlarm	1.3.6.1.4.1.318.1.1.7.2.4.2.2.8.0:0	<b>Long</b>	Read/Write
Config.dm3ConfigConvDiagAlarm	1.3.6.1.4.1.318.1.1.7.2.4.2.2.6.0:0	<b>Long</b>	Read/Write
Config.dm3ConfigConvFailAlarm	1.3.6.1.4.1.318.1.1.7.2.4.2.2.11.0:0	<b>Long</b>	Read/Write
Config.dm3ConfigConvFailComm	1.3.6.1.4.1.318.1.1.7.2.4.2.1.7.0:0	<b>Long</b>	Read/Write
Config.dm3ConfigConvFailMax	1.3.6.1.4.1.318.1.1.7.2.4.2.1.5.0:0	<b>Long</b>	Read/Write
Config.dm3ConfigConvFailMin	1.3.6.1.4.1.318.1.1.7.2.4.2.1.6.0:0	<b>Long</b>	Read/Write
Config.dm3ConfigConvFailSafe	1.3.6.1.4.1.318.1.1.7.2.4.2.1.3.0:0	<b>Long</b>	Read/Write
Config.dm3ConfigConvFanFailAlarm	1.3.6.1.4.1.318.1.1.7.2.4.2.2.10.0:0	<b>Long</b>	Read/Write
Config.dm3ConfigConvHighVoltAlarm	1.3.6.1.4.1.318.1.1.7.2.4.2.2.1.0:0	<b>Long</b>	Read/Write
Config.dm3ConfigConvHighVoltThresh	1.3.6.1.4.1.318.1.1.7.2.4.2.1.1.0:0	<b>Long</b>	Read/Write
Config.dm3ConfigConvHwVoltAlarm	1.3.6.1.4.1.318.1.1.7.2.4.2.2.12.0:0	<b>Long</b>	Read/Write
Config.dm3ConfigConvImbalanceAlarm	1.3.6.1.4.1.318.1.1.7.2.4.2.2.7.0:0	<b>Long</b>	Read/Write
Config.dm3ConfigConvLowVoltAlarm	1.3.6.1.4.1.318.1.1.7.2.4.2.2.2.0:0	<b>Long</b>	Read/Write
Config.dm3ConfigConvLowVoltThresh	1.3.6.1.4.1.318.1.1.7.2.4.2.1.2.0:0	<b>Long</b>	Read/Write
Config.dm3ConfigConvSetPoint	1.3.6.1.4.1.318.1.1.7.2.4.2.1.4.0:0	<b>Long</b>	Read/Write
Config.dm3ConfigConvStandbyAlarm	1.3.6.1.4.1.318.1.1.7.2.4.2.2.9.0:0	<b>Long</b>	Read/Write
Config.dm3ConfigFusesTableSize	1.3.6.1.4.1.318.1.1.7.2.6.2.1.0:0	<b>Long</b>	Read Only
Config.dm3ConfigHighKneeTemp	1.3.6.1.4.1.318.1.1.7.2.3.16.0:0	<b>Long</b>	Read/Write
Config.dm3ConfigInRlyTableSize	1.3.6.1.4.1.318.1.1.7.2.5.2.1.0:0	<b>Long</b>	Read Only
Config.dm3ConfigLowKneeTemp	1.3.6.1.4.1.318.1.1.7.2.3.17.0:0	<b>Long</b>	Read/Write
Config.dm3ConfigLVDTTableSize	1.3.6.1.4.1.318.1.1.7.2.2.1.0:0	<b>Long</b>	Read Only
Config.dm3ConfigOutRlyTableSize	1.3.6.1.4.1.318.1.1.7.2.5.1.1.0:0	<b>Long</b>	Read Only
Config.dm3ConfigRect1ofNAlarm	1.3.6.1.4.1.318.1.1.7.2.4.1.2.4.0:0	<b>Long</b>	Read/Write
Config.dm3ConfigRect2ofNAlarm	1.3.6.1.4.1.318.1.1.7.2.4.1.2.5.0:0	<b>Long</b>	Read/Write
Config.dm3ConfigRectConfigAlarm	1.3.6.1.4.1.318.1.1.7.2.4.1.2.3.0:0	<b>Long</b>	Read/Write
Config.dm3ConfigRectCurrLimitAlarm	1.3.6.1.4.1.318.1.1.7.2.4.1.2.8.0:0	<b>Long</b>	Read/Write
Config.dm3ConfigRectDiagAlarm	1.3.6.1.4.1.318.1.1.7.2.4.1.2.6.0:0	<b>Long</b>	Read/Write
Config.dm3ConfigRectFailAlarm	1.3.6.1.4.1.318.1.1.7.2.4.1.2.11.0:0	<b>Long</b>	Read/Write
Config.dm3ConfigRectFailComm	1.3.6.1.4.1.318.1.1.7.2.4.1.1.4.0:0	<b>Long</b>	Read/Write
Config.dm3ConfigRectFailSafe	1.3.6.1.4.1.318.1.1.7.2.4.1.1.3.0:0	<b>Long</b>	Read/Write
Config.dm3ConfigRectFanFailAlarm	1.3.6.1.4.1.318.1.1.7.2.4.1.2.10.0:0	<b>Long</b>	Read/Write

Config.dm3ConfigRectHighVoltAlarm	1.3.6.1.4.1.318.1.1.7.2.4.1.2.1.0:0	Long	Read/Write
Config.dm3ConfigRectHighVoltThresh	1.3.6.1.4.1.318.1.1.7.2.4.1.1.1.0:0	Long	Read/Write
Config.dm3ConfigRectHwVoltAlarm	1.3.6.1.4.1.318.1.1.7.2.4.1.2.12.0:0	Long	Read/Write
Config.dm3ConfigRectImbalanceAlarm	1.3.6.1.4.1.318.1.1.7.2.4.1.2.7.0:0	Long	Read/Write
Config.dm3ConfigRectLowVoltAlarm	1.3.6.1.4.1.318.1.1.7.2.4.1.2.2.0:0	Long	Read/Write
Config.dm3ConfigRectLowVoltThresh	1.3.6.1.4.1.318.1.1.7.2.4.1.1.2.0:0	Long	Read/Write
Config.dm3ConfigRectStandbyAlarm	1.3.6.1.4.1.318.1.1.7.2.4.1.2.9.0:0	Long	Read/Write
Config.dm3ConfigSysDescriptionTableSize	1.3.6.1.4.1.318.1.1.7.2.1.1.0:0	Long	Read Only
Config.dm3ConfigSysHardwareTempAlarm	1.3.6.1.4.1.318.1.1.7.2.1.7.0:0	Long	Read/Write
Config.dm3ConfigSysHighTempAlarm	1.3.6.1.4.1.318.1.1.7.2.1.4.0:0	Long	Read/Write
Config.dm3ConfigSysHighTempThresh	1.3.6.1.4.1.318.1.1.7.2.1.3.0:0	Long	Read/Write
Config.dm3ConfigSysLowTempAlarm	1.3.6.1.4.1.318.1.1.7.2.1.6.0:0	Long	Read/Write
Config.dm3ConfigSysLowTempThresh	1.3.6.1.4.1.318.1.1.7.2.1.5.0:0	Long	Read/Write
Config.dm3ConfigSysRemoteAccess	1.3.6.1.4.1.318.1.1.7.2.1.8.0:0	Long	Read/Write

**Group: UPSDM3IDENT**

Tag Name	Object ID	Data Type	Access
dm3IdentSysCntrlRev	1.3.6.1.4.1.318.1.1.7.1.1.4.0:0	Long	Read Only
dm3IdentSysDescriptionTableSize	1.3.6.1.4.1.318.1.1.7.1.1.1.0:0	Long	Read Only
dm3IdentSysFWVersion	1.3.6.1.4.1.318.1.1.7.1.1.5.0:0	Long	Read Only
dm3IdentSysModel	1.3.6.1.4.1.318.1.1.7.1.1.3.0:0	Long	Read Only

**Group: UPSDM3STATUS**

Tag Name	Object ID	Data Type	Access
Status.dm3StatusAlarmsTableSize	1.3.6.1.4.1.318.1.1.7.3.2.1.0:0	Long	Read Only
Status.dm3StatusBattCurrent	1.3.6.1.4.1.318.1.1.7.3.3.1.0:0	Long	Read Only
Status.dm3StatusBattCurrentSanity	1.3.6.1.4.1.318.1.1.7.3.3.3.0:0	Long	Read Only
Status.dm3StatusBattTemp	1.3.6.1.4.1.318.1.1.7.3.3.2.0:0	Long	Read Only
Status.dm3StatusBattTempSanity	1.3.6.1.4.1.318.1.1.7.3.3.4.0:0	Long	Read Only
Status.dm3StatusBreakersTableSize	1.3.6.1.4.1.318.1.1.7.3.8.1.1.0:0	Long	Read Only
Status.dm3StatusConvTableSize	1.3.6.1.4.1.318.1.1.7.3.6.2.1.0:0	Long	Read Only
Status.dm3StatusFusesTableSize	1.3.6.1.4.1.318.1.1.7.3.8.2.1.0:0	Long	Read Only
Status.dm3StatusInRlyTableSize	1.3.6.1.4.1.318.1.1.7.3.7.2.1.0:0	Long	Read Only
Status.dm3StatusLVDTTableSize	1.3.6.1.4.1.318.1.1.7.3.5.1.0:0	Long	Read Only
Status.dm3StatusOEMconvGain	1.3.6.1.4.1.318.1.1.7.3.4.4.0:0	Long	Read Only
Status.dm3StatusOEMconvOffset	1.3.6.1.4.1.318.1.1.7.3.4.3.0:0	Long	Read Only
Status.dm3StatusOEMrectGain	1.3.6.1.4.1.318.1.1.7.3.4.2.0:0	Long	Read Only
Status.dm3StatusOEMrectOffset	1.3.6.1.4.1.318.1.1.7.3.4.1.0:0	Long	Read Only
Status.dm3StatusOEMshuntGain	1.3.6.1.4.1.318.1.1.7.3.4.6.0:0	Long	Read Only
Status.dm3StatusOEMshuntOffset	1.3.6.1.4.1.318.1.1.7.3.4.5.0:0	Long	Read Only
Status.dm3StatusOutRlyTableSize	1.3.6.1.4.1.318.1.1.7.3.7.1.1.0:0	Long	Read Only
Status.dm3StatusRectTableSize	1.3.6.1.4.1.318.1.1.7.3.6.1.1.0:0	Long	Read Only
Status.dm3StatusSysAlarmState	1.3.6.1.4.1.318.1.1.7.3.1.6.0:0	Long	Read Only
Status.dm3StatusSysConvAvailable	1.3.6.1.4.1.318.1.1.7.3.6.2.4.0:0	Long	Read Only
Status.dm3StatusSysConvCurrent	1.3.6.1.4.1.318.1.1.7.3.6.2.7.0:0	Long	Read Only
Status.dm3StatusSysConvType	1.3.6.1.4.1.318.1.1.7.3.6.2.5.0:0	Long	Read Only
Status.dm3StatusSysConvVoltage	1.3.6.1.4.1.318.1.1.7.3.6.2.6.0:0	Long	Read Only
Status.dm3StatusSysConvVoltSanity	1.3.6.1.4.1.318.1.1.7.3.6.2.3.0:0	Long	Read Only

Status.dm3StatusSysRectAvailable	1.3.6.1.4.1.318.1.1.7.3.6.1.4.0:0	<b>Long</b>	Read Only
Status.dm3StatusSysRectCurrent	1.3.6.1.4.1.318.1.1.7.3.6.1.7.0:0	<b>Long</b>	Read Only
Status.dm3StatusSysRectType	1.3.6.1.4.1.318.1.1.7.3.6.1.5.0:0	<b>Long</b>	Read Only
Status.dm3StatusSysRectVoltage	1.3.6.1.4.1.318.1.1.7.3.6.1.6.0:0	<b>Long</b>	Read Only
Status.dm3StatusSysRectVoltSanity	1.3.6.1.4.1.318.1.1.7.3.6.1.3.0:0	<b>Long</b>	Read Only
Status.dm3StatusSysRemoteAccess	1.3.6.1.4.1.318.1.1.7.3.1.3.0:0	<b>Long</b>	Read Only
Status.dm3StatusSysSecurityLevel	1.3.6.1.4.1.318.1.1.7.3.1.4.0:0	<b>Long</b>	Read Only
Status.dm3StatusSysTempSanity	1.3.6.1.4.1.318.1.1.7.3.1.5.0:0	<b>Long</b>	Read Only
Status.dm3StatusSysTempUnits	1.3.6.1.4.1.318.1.1.7.3.1.7.0:0	<b>Long</b>	Read Only
Status.dm3StatusSystemStart	1.3.6.1.4.1.318.1.1.7.3.1.2.0:0	<b>String</b>	Read Only
Status.dm3StatusSystemTemp	1.3.6.1.4.1.318.1.1.7.3.1.1.0:0	<b>Long</b>	Read Only

**Group: UPSEMS**

Tag Name	Object ID	Data Type	Access
emsConfigCheckLogLight	1.3.6.1.4.1.318.1.1.10.3.6.2.0:0	<b>Long</b>	Read/Write
emsConfigName	1.3.6.1.4.1.318.1.1.10.3.6.1.0:0	<b>String</b>	Read/Write
emsIdentDATEOfManufacture	1.3.6.1.4.1.318.1.1.10.3.1.5.0:0	<b>String</b>	Read Only
emsIdentEMSName	1.3.6.1.4.1.318.1.1.10.3.1.1.0:0	<b>String</b>	Read Only
emsIdentFirmwareRev	1.3.6.1.4.1.318.1.1.10.3.1.3.0:0	<b>String</b>	Read Only
emsIdentHardwareRev	1.3.6.1.4.1.318.1.1.10.3.1.4.0:0	<b>String</b>	Read Only
emsIdentProductNumber	1.3.6.1.4.1.318.1.1.10.3.1.2.0:0	<b>String</b>	Read Only
emsIdentSerialNumber	1.3.6.1.4.1.318.1.1.10.3.1.6.0:0	<b>String</b>	Read Only
emsStatusAlarmDeviceCount	1.3.6.1.4.1.318.1.1.10.3.12.10.0:0	<b>Long</b>	Read Only
emsStatusAlinkAruDeviceCount	1.3.6.1.4.1.318.1.1.10.3.12.8.0:0	<b>Long</b>	Read Only
emsStatusAlinkProbeDeviceCount	1.3.6.1.4.1.318.1.1.10.3.12.9.0:0	<b>Long</b>	Read Only
emsStatusCheckLogLight	1.3.6.1.4.1.318.1.1.10.3.12.12.0:0	<b>Long</b>	Read Only
emsStatusCommStatus	1.3.6.1.4.1.318.1.1.10.3.12.2.0:0	<b>Long</b>	Read Only
emsStatusEMSName	1.3.6.1.4.1.318.1.1.10.3.12.1.0:0	<b>String</b>	Read Only
emsStatusInputContactCount	1.3.6.1.4.1.318.1.1.10.3.12.4.0:0	<b>Long</b>	Read Only
emsStatusOutletCount	1.3.6.1.4.1.318.1.1.10.3.12.6.0:0	<b>Long</b>	Read Only
emsStatusOutputRelayCount	1.3.6.1.4.1.318.1.1.10.3.12.5.0:0	<b>Long</b>	Read Only
emsStatusProbeCount	1.3.6.1.4.1.318.1.1.10.3.12.3.0:0	<b>Long</b>	Read Only
emsStatusSensorCount	1.3.6.1.4.1.318.1.1.10.3.12.7.0:0	<b>Long</b>	Read Only
emsStatusSysTempUnits	1.3.6.1.4.1.318.1.1.10.3.12.11.0:0	<b>Long</b>	Read Only

**Group: UPSENV**

Tag Name	Object ID	Data Type	Access
mUpsContactNumContacts	1.3.6.1.4.1.318.1.1.2.2.1.0:0	<b>Long</b>	Read Only
mUpsEnvironAmbientTemperature	1.3.6.1.4.1.318.1.1.2.1.1.0:0	<b>DWord</b>	Read Only
mUpsEnvironAmbientTemperature2	1.3.6.1.4.1.318.1.1.2.1.3.0:0	<b>DWord</b>	Read Only
mUpsEnvironRelativeHumidity	1.3.6.1.4.1.318.1.1.2.1.2.0:0	<b>DWord</b>	Read Only
mUpsEnvironRelativeHumidity2	1.3.6.1.4.1.318.1.1.2.1.4.0:0	<b>DWord</b>	Read Only

**Group: UPSEXTENV**

Tag Name	Object ID	Data Type	Access
emIdentFirmwareRevision	1.3.6.1.4.1.318.1.1.10.1.1.1.0:0	<b>String</b>	Read Only

**Group: UPSEXTENVCFG**

Tag Name	Object ID	Data Type	Access
Config.emConfigContactEnable_01	1.3.6.1.4.1.318.1.1.10.1.2.4.1.3:1	Long	Read/Write
Config.emConfigContactEnable_02	1.3.6.1.4.1.318.1.1.10.1.2.4.1.3:2	Long	Read/Write
Config.emConfigContactEnable_03	1.3.6.1.4.1.318.1.1.10.1.2.4.1.3:3	Long	Read/Write
Config.emConfigContactEnable_04	1.3.6.1.4.1.318.1.1.10.1.2.4.1.3:4	Long	Read/Write
Config.emConfigContactName_01	1.3.6.1.4.1.318.1.1.10.1.2.4.1.2:1	String	Read/Write
Config.emConfigContactName_02	1.3.6.1.4.1.318.1.1.10.1.2.4.1.2:2	String	Read/Write
Config.emConfigContactName_03	1.3.6.1.4.1.318.1.1.10.1.2.4.1.2:3	String	Read/Write
Config.emConfigContactName_04	1.3.6.1.4.1.318.1.1.10.1.2.4.1.2:4	String	Read/Write
Config.emConfigContactNumber_01	1.3.6.1.4.1.318.1.1.10.1.2.4.1.1:1	Long	Read Only
Config.emConfigContactNumber_02	1.3.6.1.4.1.318.1.1.10.1.2.4.1.1:2	Long	Read Only
Config.emConfigContactNumber_03	1.3.6.1.4.1.318.1.1.10.1.2.4.1.1:3	Long	Read Only
Config.emConfigContactNumber_04	1.3.6.1.4.1.318.1.1.10.1.2.4.1.1:4	Long	Read Only
Config.emConfigContactsNumContacts	1.3.6.1.4.1.318.1.1.10.1.2.3.0:0	Long	Read Only
Config.emConfigProbeHighHumidEnable_01	1.3.6.1.4.1.318.1.1.10.1.2.2.1.10:1	Long	Read/Write
Config.emConfigProbeHighHumidEnable_02	1.3.6.1.4.1.318.1.1.10.1.2.2.1.10:2	Long	Read/Write
Config.emConfigProbeHighHumidThreshold_01	1.3.6.1.4.1.318.1.1.10.1.2.2.1.6:1	Long	Read/Write
Config.emConfigProbeHighHumidThreshold_02	1.3.6.1.4.1.318.1.1.10.1.2.2.1.6:2	Long	Read/Write
Config.emConfigProbeHighTempEnable_01	1.3.6.1.4.1.318.1.1.10.1.2.2.1.8:1	Long	Read/Write
Config.emConfigProbeHighTempEnable_02	1.3.6.1.4.1.318.1.1.10.1.2.2.1.8:2	Long	Read/Write
Config.emConfigProbeHighTempThreshold_01	1.3.6.1.4.1.318.1.1.10.1.2.2.1.3:1	Long	Read/Write
Config.emConfigProbeHighTempThreshold_02	1.3.6.1.4.1.318.1.1.10.1.2.2.1.3:2	Long	Read/Write
Config.emConfigProbeLowHumidEnable_01	1.3.6.1.4.1.318.1.1.10.1.2.2.1.11:1	Long	Read/Write
Config.emConfigProbeLowHumidEnable_02	1.3.6.1.4.1.318.1.1.10.1.2.2.1.11:2	Long	Read/Write
Config.emConfigProbeLowHumidThreshold_01	1.3.6.1.4.1.318.1.1.10.1.2.2.1.7:1	Long	Read/Write
Config.emConfigProbeLowHumidThreshold_02	1.3.6.1.4.1.318.1.1.10.1.2.2.1.7:2	Long	Read/Write
Config.emConfigProbeLowTempEnable_01	1.3.6.1.4.1.318.1.1.10.1.2.2.1.9:1	Long	Read/Write
Config.emConfigProbeLowTempEnable_02	1.3.6.1.4.1.318.1.1.10.1.2.2.1.9:2	Long	Read/Write
Config.emConfigProbeLowTempThreshold_01	1.3.6.1.4.1.318.1.1.10.1.2.2.1.4:1	Long	Read/Write
Config.emConfigProbeLowTempThreshold_02	1.3.6.1.4.1.318.1.1.10.1.2.2.1.4:2	Long	Read/Write
Config.emConfigProbeName_01	1.3.6.1.4.1.318.1.1.10.1.2.2.1.2:1	String	Read/Write
Config.emConfigProbeName_02	1.3.6.1.4.1.318.1.1.10.1.2.2.1.2:2	String	Read/Write
Config.emConfigProbeNumber_01	1.3.6.1.4.1.318.1.1.10.1.2.2.1.1:1	Long	Read Only
Config.emConfigProbeNumber_02	1.3.6.1.4.1.318.1.1.10.1.2.2.1.1:2	Long	Read Only
Config.emConfigProbesNumProbes	1.3.6.1.4.1.318.1.1.10.1.2.1.0:0	Long	Read Only
Config.emConfigProbeTempUnits_01	1.3.6.1.4.1.318.1.1.10.1.2.2.1.5:1	Long	Read Only
Config.emConfigProbeTempUnits_02	1.3.6.1.4.1.318.1.1.10.1.2.2.1.5:2	Long	Read Only

**Group: UPSEXTENVSTAT**

Tag Name	Object ID	Data Type	Access
Status.emStatusCommStatus	1.3.6.1.4.1.318.1.1.10.1.3.1.0:0	Long	Read Only
Status.emStatusContactName_01	1.3.6.1.4.1.318.1.1.10.1.3.5.1.2:1	String	Read Only
Status.emStatusContactName_02	1.3.6.1.4.1.318.1.1.10.1.3.5.1.2:2	String	Read Only
Status.emStatusContactName_03	1.3.6.1.4.1.318.1.1.10.1.3.5.1.2:3	String	Read Only
Status.emStatusContactName_04	1.3.6.1.4.1.318.1.1.10.1.3.5.1.2:4	String	Read Only
Status.emStatusContactNumber_01	1.3.6.1.4.1.318.1.1.10.1.3.5.1.1:1	Long	Read Only
Status.emStatusContactNumber_02	1.3.6.1.4.1.318.1.1.10.1.3.5.1.1:2	Long	Read Only
Status.emStatusContactNumber_03	1.3.6.1.4.1.318.1.1.10.1.3.5.1.1:3	Long	Read Only

Status.emStatusContactNumber_04	1.3.6.1.4.1.318.1.1.10.1.3.5.1.1:4	Long	Read Only
Status.emStatusContactsNumContacts	1.3.6.1.4.1.318.1.1.10.1.3.4.0:0	Long	Read Only
Status.emStatusContactStatus_01	1.3.6.1.4.1.318.1.1.10.1.3.5.1.3:1	Long	Read Only
Status.emStatusContactStatus_02	1.3.6.1.4.1.318.1.1.10.1.3.5.1.3:2	Long	Read Only
Status.emStatusContactStatus_03	1.3.6.1.4.1.318.1.1.10.1.3.5.1.3:3	Long	Read Only
Status.emStatusContactStatus_04	1.3.6.1.4.1.318.1.1.10.1.3.5.1.3:4	Long	Read Only
Status.emStatusProbeCurrentHumid_01	1.3.6.1.4.1.318.1.1.10.1.3.3.1.6:1	Long	Read Only
Status.emStatusProbeCurrentHumid_02	1.3.6.1.4.1.318.1.1.10.1.3.3.1.6:2	Long	Read Only
Status.emStatusProbeCurrentTemp_01	1.3.6.1.4.1.318.1.1.10.1.3.3.1.4:1	Long	Read Only
Status.emStatusProbeCurrentTemp_02	1.3.6.1.4.1.318.1.1.10.1.3.3.1.4:2	Long	Read Only
Status.emStatusProbeHighHumidViolation_01	1.3.6.1.4.1.318.1.1.10.1.3.3.1.9:1	Long	Read Only
Status.emStatusProbeHighHumidViolation_02	1.3.6.1.4.1.318.1.1.10.1.3.3.1.9:2	Long	Read Only
Status.emStatusProbeHighTempViolation_01	1.3.6.1.4.1.318.1.1.10.1.3.3.1.7:1	Long	Read Only
Status.emStatusProbeHighTempViolation_02	1.3.6.1.4.1.318.1.1.10.1.3.3.1.7:2	Long	Read Only
Status.emStatusProbeLowHumidViolation_01	1.3.6.1.4.1.318.1.1.10.1.3.3.1.10:1	Long	Read Only
Status.emStatusProbeLowHumidViolation_02	1.3.6.1.4.1.318.1.1.10.1.3.3.1.10:2	Long	Read Only
Status.emStatusProbeLowTempViolation_01	1.3.6.1.4.1.318.1.1.10.1.3.3.1.8:1	Long	Read Only
Status.emStatusProbeLowTempViolation_02	1.3.6.1.4.1.318.1.1.10.1.3.3.1.8:2	Long	Read Only
Status.emStatusProbeName_01	1.3.6.1.4.1.318.1.1.10.1.3.3.1.2:1	String	Read Only
Status.emStatusProbeName_02	1.3.6.1.4.1.318.1.1.10.1.3.3.1.2:2	String	Read Only
Status.emStatusProbeNumber_01	1.3.6.1.4.1.318.1.1.10.1.3.3.1.1:1	Long	Read Only
Status.emStatusProbeNumber_02	1.3.6.1.4.1.318.1.1.10.1.3.3.1.1:2	Long	Read Only
Status.emStatusProbesNumProbes	1.3.6.1.4.1.318.1.1.10.1.3.2.0:0	Long	Read Only
Status.emStatusProbeStatus_01	1.3.6.1.4.1.318.1.1.10.1.3.3.1.3:1	Long	Read Only
Status.emStatusProbeStatus_02	1.3.6.1.4.1.318.1.1.10.1.3.3.1.3:2	Long	Read Only
Status.emStatusProbeTempUnits_01	1.3.6.1.4.1.318.1.1.10.1.3.3.1.5:1	Long	Read Only
Status.emStatusProbeTempUnits_02	1.3.6.1.4.1.318.1.1.10.1.3.3.1.5:2	Long	Read Only

**Group: UPSIDENT**

Tag Name	Object ID	Data Type	Access
upsAdvIdentDATEOfManufacture	1.3.6.1.4.1.318.1.1.1.1.2.2.0:0	String	Read Only
upsAdvIdentFirmwareRevision	1.3.6.1.4.1.318.1.1.1.1.2.1.0:0	String	Read Only
upsAdvIdentSerialNumber	1.3.6.1.4.1.318.1.1.1.1.2.3.0:0	String	Read Only
upsBasicIdentModel	1.3.6.1.4.1.318.1.1.1.1.1.1.0:0	String	Read Only
upsBasicIdentName	1.3.6.1.4.1.318.1.1.1.1.1.2.0:0	String	Read/Write

**Group: UPSINPUT**

Tag Name	Object ID	Data Type	Access
upsAdvInputFrequency	1.3.6.1.4.1.318.1.1.1.3.2.4.0:0	DWord	Read Only
upsAdvInputLineFailCause	1.3.6.1.4.1.318.1.1.1.3.2.5.0:0	Long	Read Only
upsAdvInputLineVoltage	1.3.6.1.4.1.318.1.1.1.3.2.1.0:0	DWord	Read Only
upsAdvInputMaxLineVoltage	1.3.6.1.4.1.318.1.1.1.3.2.2.0:0	DWord	Read Only
upsAdvInputMinLineVoltage	1.3.6.1.4.1.318.1.1.1.3.2.3.0:0	DWord	Read Only
upsBasicInputPhase	1.3.6.1.4.1.318.1.1.1.3.1.1.0:0	Long	Read Only

**Group: UPSINTENV**

Tag Name	Object ID	Data Type	Access
iemIdentHardwareRevision	1.3.6.1.4.1.318.1.1.10.2.1.1.0:0	String	Read Only

**Group: UPSINTENVCNFG**

Tag Name	Object ID	Data Type	Access
Config.iemConfigContactEnable_01	1.3.6.1.4.1.318.1.1.10.2.2.4.1.3:1	Long	Read/Write
Config.iemConfigContactEnable_02	1.3.6.1.4.1.318.1.1.10.2.2.4.1.3:2	Long	Read/Write
Config.iemConfigContactName_01	1.3.6.1.4.1.318.1.1.10.2.2.4.1.2:1	String	Read/Write
Config.iemConfigContactName_02	1.3.6.1.4.1.318.1.1.10.2.2.4.1.2:2	String	Read/Write
Config.iemConfigContactNumber_01	1.3.6.1.4.1.318.1.1.10.2.2.4.1.1:1	Long	Read Only
Config.iemConfigContactNumber_02	1.3.6.1.4.1.318.1.1.10.2.2.4.1.1:2	Long	Read Only
Config.iemConfigContactsNumContacts	1.3.6.1.4.1.318.1.1.10.2.2.3.0:0	Long	Read Only
Config.iemConfigProbeHighHumidEnable_01	1.3.6.1.4.1.318.1.1.10.2.2.2.1.10:1	Long	Read/Write
Config.iemConfigProbeHighHumidThreshold_01	1.3.6.1.4.1.318.1.1.10.2.2.2.1.6:1	Long	Read/Write
Config.iemConfigProbeHighTempEnable_01	1.3.6.1.4.1.318.1.1.10.2.2.2.1.8:1	Long	Read/Write
Config.iemConfigProbeHighTempThreshold_01	1.3.6.1.4.1.318.1.1.10.2.2.2.1.3:1	Long	Read/Write
Config.iemConfigProbeLowHumidEnable_01	1.3.6.1.4.1.318.1.1.10.2.2.2.1.11:1	Long	Read/Write
Config.iemConfigProbeLowHumidThreshold_01	1.3.6.1.4.1.318.1.1.10.2.2.2.1.7:1	Long	Read/Write
Config.iemConfigProbeLowTempEnable_01	1.3.6.1.4.1.318.1.1.10.2.2.2.1.9:1	Long	Read/Write
Config.iemConfigProbeLowTempThreshold_01	1.3.6.1.4.1.318.1.1.10.2.2.2.1.4:1	Long	Read/Write
Config.iemConfigProbeName_01	1.3.6.1.4.1.318.1.1.10.2.2.2.1.2:1	String	Read/Write
Config.iemConfigProbeNumber_01	1.3.6.1.4.1.318.1.1.10.2.2.2.1.1:1	Long	Read Only
Config.iemConfigProbesNumProbes	1.3.6.1.4.1.318.1.1.10.2.2.1.0:0	Long	Read Only
Config.iemConfigProbeTempUnits_01	1.3.6.1.4.1.318.1.1.10.2.2.2.1.5:1	Long	Read Only

**Group: UPSINTENVSTAT**

Tag Name	Object ID	Data Type	Access
Status.iemStatusContactName_01	1.3.6.1.4.1.318.1.1.10.2.3.4.1.2:1	String	Read Only
Status.iemStatusContactName_02	1.3.6.1.4.1.318.1.1.10.2.3.4.1.2:2	String	Read Only
Status.iemStatusContactNumber_01	1.3.6.1.4.1.318.1.1.10.2.3.4.1.1:1	Long	Read Only
Status.iemStatusContactNumber_02	1.3.6.1.4.1.318.1.1.10.2.3.4.1.1:2	Long	Read Only
Status.iemStatusContactsNumContacts	1.3.6.1.4.1.318.1.1.10.2.3.3.0:0	Long	Read Only
Status.iemStatusContactStatus_01	1.3.6.1.4.1.318.1.1.10.2.3.4.1.3:1	Long	Read Only
Status.iemStatusContactStatus_02	1.3.6.1.4.1.318.1.1.10.2.3.4.1.3:2	Long	Read Only
Status.iemStatusProbeCurrentHumid_01	1.3.6.1.4.1.318.1.1.10.2.3.2.1.6:1	Long	Read Only
Status.iemStatusProbeCurrentTemp_01	1.3.6.1.4.1.318.1.1.10.2.3.2.1.4:1	Long	Read Only
Status.iemStatusProbeHighHumidViolation_01	1.3.6.1.4.1.318.1.1.10.2.3.2.1.9:1	Long	Read Only
Status.iemStatusProbeHighTempViolation_01	1.3.6.1.4.1.318.1.1.10.2.3.2.1.7:1	Long	Read Only
Status.iemStatusProbeLowHumidViolation_01	1.3.6.1.4.1.318.1.1.10.2.3.2.1.10:1	Long	Read Only
Status.iemStatusProbeLowTempViolation_01	1.3.6.1.4.1.318.1.1.10.2.3.2.1.8:1	Long	Read Only
Status.iemStatusProbeName_01	1.3.6.1.4.1.318.1.1.10.2.3.2.1.2:1	String	Read Only
Status.iemStatusProbeNumber_01	1.3.6.1.4.1.318.1.1.10.2.3.2.1.1:1	Long	Read Only
Status.iemStatusProbesNumProbes	1.3.6.1.4.1.318.1.1.10.2.3.1.0:0	Long	Read Only
Status.iemStatusProbeStatus_01	1.3.6.1.4.1.318.1.1.10.2.3.2.1.3:1	Long	Read Only
Status.iemStatusProbeTempUnits_01	1.3.6.1.4.1.318.1.1.10.2.3.2.1.5:1	Long	Read Only
Status.iemStatusRelayName_01	1.3.6.1.4.1.318.1.1.10.2.3.7.1.2:1	String	Read Only
Status.iemStatusRelayNumber_01	1.3.6.1.4.1.318.1.1.10.2.3.7.1.1:1	Long	Read Only
Status.iemStatusRelaysNumRelays	1.3.6.1.4.1.318.1.1.10.2.3.6.0:0	Long	Read Only
Status.iemStatusRelayStatus_01	1.3.6.1.4.1.318.1.1.10.2.3.7.1.3:1	Long	Read Only

**Group: UPSOUTLETGRP**

Tag Name	Object ID	Data Type	Access
upsOutletGroupConfigIndex_01	1.3.6.1.4.1.318.1.1.1.12.2.2.1.1:1	Long	Read Only
upsOutletGroupConfigName_01	1.3.6.1.4.1.318.1.1.1.12.2.2.1.2:1	String	Read/Write
upsOutletGroupConfigPowerOffDelay_01	1.3.6.1.4.1.318.1.1.1.12.2.2.1.4:1	Long	Read/Write
upsOutletGroupConfigPowerOnDelay_01	1.3.6.1.4.1.318.1.1.1.12.2.2.1.3:1	Long	Read/Write
upsOutletGroupConfigRebootDuration_01	1.3.6.1.4.1.318.1.1.1.12.2.2.1.5:1	Long	Read/Write
upsOutletGroupConfigTableSize	1.3.6.1.4.1.318.1.1.1.12.2.1.0:0	Long	Read Only
upsOutletGroupControlCommand_01	1.3.6.1.4.1.318.1.1.1.12.3.2.1.3:1	Long	Read/Write
upsOutletGroupControlIndex_01	1.3.6.1.4.1.318.1.1.1.12.3.2.1.1:1	Long	Read Only
upsOutletGroupControlName_01	1.3.6.1.4.1.318.1.1.1.12.3.2.1.2:1	String	Read Only
upsOutletGroupControlTableSize	1.3.6.1.4.1.318.1.1.1.12.3.1.0:0	Long	Read Only
upsOutletGroupStatusCommandPending_01	1.3.6.1.4.1.318.1.1.1.12.1.2.1.4:1	Long	Read Only
upsOutletGroupStatusGroupState_01	1.3.6.1.4.1.318.1.1.1.12.1.2.1.3:1	Long	Read Only
upsOutletGroupStatusIndex_01	1.3.6.1.4.1.318.1.1.1.12.1.2.1.1:1	Long	Read Only
upsOutletGroupStatusName_01	1.3.6.1.4.1.318.1.1.1.12.1.2.1.2:1	String	Read Only
upsOutletGroupStatusTableSize	1.3.6.1.4.1.318.1.1.1.12.1.1.0:0	Long	Read Only

**Group: UPSOUTPUT**

Tag Name	Object ID	Data Type	Access
upsAdvOutputCurrent	1.3.6.1.4.1.318.1.1.1.4.2.4.0:0	DWord	Read Only
upsAdvOutputFrequency	1.3.6.1.4.1.318.1.1.1.4.2.2.0:0	DWord	Read Only
upsAdvOutputLoad	1.3.6.1.4.1.318.1.1.1.4.2.3.0:0	DWord	Read Only
upsAdvOutputVoltage	1.3.6.1.4.1.318.1.1.1.4.2.1.0:0	DWord	Read Only
upsBasicOutputPhase	1.3.6.1.4.1.318.1.1.1.4.1.2.0:0	Long	Read Only
upsBasicOutputStatus	1.3.6.1.4.1.318.1.1.1.4.1.1.0:0	Long	Read Only

**Group: UPSPHASE**

Tag Name	Object ID	Data Type	Access
upsPhaseNumInputs	1.3.6.1.4.1.318.1.1.1.9.2.1.0:0	Long	Read Only
upsPhaseNumOutputs	1.3.6.1.4.1.318.1.1.1.9.3.1.0:0	Long	Read Only
upsPhaseResetMaxMinValues	1.3.6.1.4.1.318.1.1.1.9.1.1.0:0	Long	Read/Write

**Group: UPSPNS**

Tag Name	Object ID	Data Type	Access
powerNetSoftwareOid	1.3.6.1.4.1.318.1.2.1.1.2.0:0	String	Read Only
powerNetSoftwareSystemDescription	1.3.6.1.4.1.318.1.2.1.1.1.0:0	String	Read Only
powerNetSoftwareSystemUpTime	1.3.6.1.4.1.318.1.2.1.1.3.0:0	DWord	Read Only
powerNetSoftwareTableSize	1.3.6.1.4.1.318.1.2.1.2.1.0:0	Long	Read Only

**Group: UPSRAU**

Tag Name	Object ID	Data Type	Access
rARUStatusAruDeviceCount	1.3.6.1.4.1.318.1.1.14.3.1.0:0	Long	Read Only
rARUStatusSysTempUnits	1.3.6.1.4.1.318.1.1.14.3.2.0:0	Long	Read Only

**Group: UPSRPDU**

Tag Name	Object ID	Data Type	Access
rPDUIdentDATEOfManufacture	1.3.6.1.4.1.318.1.1.12.1.4.0:0	String	Read Only
rPDUIdentFirmwareRev	1.3.6.1.4.1.318.1.1.12.1.3.0:0	String	Read Only
rPDUIdentHardwareRev	1.3.6.1.4.1.318.1.1.12.1.2.0:0	String	Read Only

rPDUIdentModelNumber	1.3.6.1.4.1.318.1.1.12.1.5.0:0	String	Read Only
rPDUIdentName	1.3.6.1.4.1.318.1.1.12.1.1.0:0	String	Read/Write
rPDUIdentSerialNumber	1.3.6.1.4.1.318.1.1.12.1.6.0:0	String	Read Only
rPDULoadDevMaxPhaseLoad	1.3.6.1.4.1.318.1.1.12.2.1.1.0:0	Long	Read Only
rPDULoadDevNumPhases	1.3.6.1.4.1.318.1.1.12.2.1.2.0:0	Long	Read Only
rPDUOutletDevColdstartDelay	1.3.6.1.4.1.318.1.1.12.3.1.2.0:0	Long	Read/Write
rPDUOutletDevCommand	1.3.6.1.4.1.318.1.1.12.3.1.1.0:0	Long	Read/Write
rPDUOutletDevNumCntrlOutlets	1.3.6.1.4.1.318.1.1.12.3.1.3.0:0	Long	Read Only
rPDUPowerSupply1Status	1.3.6.1.4.1.318.1.1.12.4.1.1.0:0	Long	Read Only
rPDUPowerSupply2Status	1.3.6.1.4.1.318.1.1.12.4.1.2.0:0	Long	Read Only

**Group: UPSSCG**

Tag Name	Object ID	Data Type	Access
.upsSCGActiveMembershipStatus	1.3.6.1.4.1.318.1.1.1.10.1.2.0:0	Long	Read/Write
.upsSCGMembershipGroupNumber	1.3.6.1.4.1.318.1.1.1.10.1.1.0:0	Long	Read/Write
.upsSCGMultiCastIP	1.3.6.1.4.1.318.1.1.1.10.1.5.0:0	String	Read/Write
.upsSCGNumOfGroupMembers	1.3.6.1.4.1.318.1.1.1.10.2.1.0:0	Long	Read Only
.upsSCGPowerSynchronizationDelayTime	1.3.6.1.4.1.318.1.1.1.10.1.3.0:0	Long	Read/Write
.upsSCGReturnBatteryCapacityOffset	1.3.6.1.4.1.318.1.1.1.10.1.4.0:0	Long	Read/Write

**Group: UPSSPDU**

Tag Name	Object ID	Data Type	Access
sPDUIdentDATEOfManufacture	1.3.6.1.4.1.318.1.1.4.1.3.0:0	String	Read Only
sPDUIdentFirmwareRev	1.3.6.1.4.1.318.1.1.4.1.2.0:0	String	Read Only
sPDUIdentHardwareRev	1.3.6.1.4.1.318.1.1.4.1.1.0:0	String	Read Only
sPDUIdentModelNumber	1.3.6.1.4.1.318.1.1.4.1.4.0:0	String	Read Only
sPDUIdentMSPTableSize	1.3.6.1.4.1.318.1.1.6.1.1.0:0	Long	Read Only
sPDUIdentSerialNumber	1.3.6.1.4.1.318.1.1.4.1.5.0:0	String	Read Only
sPDUIdentVMTableSize	1.3.6.1.4.1.318.1.1.5.1.1.0:0	Long	Read Only
sPDUMasterConfigMSPTableSize	1.3.6.1.4.1.318.1.1.6.3.1.0:0	Long	Read Only
sPDUMasterConfigPDUName	1.3.6.1.4.1.318.1.1.4.3.3.0:0	String	Read/Write
sPDUMasterConfigPowerOn	1.3.6.1.4.1.318.1.1.4.3.1.0:0	Long	Read/Write
sPDUMasterConfigReboot	1.3.6.1.4.1.318.1.1.4.3.2.0:0	Long	Read/Write
sPDUMasterConfigVMTableSize	1.3.6.1.4.1.318.1.1.5.3.1.0:0	Long	Read Only
sPDUMasterControlMSPTableSize	1.3.6.1.4.1.318.1.1.6.2.1.0:0	Long	Read Only
sPDUMasterControlSwitch	1.3.6.1.4.1.318.1.1.4.2.1.0:0	Long	Read/Write
sPDUMasterControlVMTableSize	1.3.6.1.4.1.318.1.1.5.2.1.0:0	Long	Read Only
sPDUMasterPending	1.3.6.1.4.1.318.1.1.4.2.3.0:0	String	Read Only
sPDUMasterState	1.3.6.1.4.1.318.1.1.4.2.2.0:0	String	Read Only
sPDUMasterStatusMSPTableSize	1.3.6.1.4.1.318.1.1.6.4.1.0:0	Long	Read Only
sPDUMasterStatusVMTableSize	1.3.6.1.4.1.318.1.1.5.4.1.0:0	Long	Read Only
sPDUOutletConfigTableSize	1.3.6.1.4.1.318.1.1.4.5.1.0:0	Long	Read Only
sPDUOutletControlTableSize	1.3.6.1.4.1.318.1.1.4.4.1.0:0	Long	Read Only

**Group: UPSSTATE**

Tag Name	Object ID	Data Type	Access
upsAdvStateAbnormalConditions	1.3.6.1.4.1.318.1.1.1.11.2.1.0:0	String	Read Only
upsAdvStateDP300ESpecificFaults	1.3.6.1.4.1.318.1.1.1.11.2.3.0:0	String	Read Only

upsAdvStateSymmetra3PhaseSpecificFaults	1.3.6.1.4.1.318.1.1.1.11.2.2.0:0	String	Read Only
upsBasicStateOutputState	1.3.6.1.4.1.318.1.1.1.11.1.1.0:0	String	Read Only

**Group: UPSTEST**

Tag Name	Object ID	Data Type	Access
upsAdvTestCalibrationDATE	1.3.6.1.4.1.318.1.1.1.7.2.7.0:0	String	Read Only
upsAdvTestCalibrationResults	1.3.6.1.4.1.318.1.1.1.7.2.6.0:0	Long	Read Only
upsAdvTestDiagnostics	1.3.6.1.4.1.318.1.1.1.7.2.2.0:0	Long	Read/Write
upsAdvTestDiagnosticSchedule	1.3.6.1.4.1.318.1.1.1.7.2.1.0:0	Long	Read/Write
upsAdvTestDiagnosticsResults	1.3.6.1.4.1.318.1.1.1.7.2.3.0:0	Long	Read Only
upsAdvTestLastDiagnosticsDATE	1.3.6.1.4.1.318.1.1.1.7.2.4.0:0	String	Read Only
upsAdvTestRuntimeCalibration	1.3.6.1.4.1.318.1.1.1.7.2.5.0:0	Long	Read/Write

**Group: UPSTRAPCNFG**

Tag Name	Object ID	Data Type	Access
Config.acceptThisReceiver_01	1.3.6.1.4.1.318.2.1.2.1.5:1	Long	Read/Write
Config.acceptThisReceiver_02	1.3.6.1.4.1.318.2.1.2.1.5:2	Long	Read/Write
Config.acceptThisReceiver_03	1.3.6.1.4.1.318.2.1.2.1.5:3	Long	Read/Write
Config.acceptThisReceiver_04	1.3.6.1.4.1.318.2.1.2.1.5:4	Long	Read/Write
Config.communityString_01	1.3.6.1.4.1.318.2.1.2.1.3:1	String	Read/Write
Config.communityString_02	1.3.6.1.4.1.318.2.1.2.1.3:2	String	Read/Write
Config.communityString_03	1.3.6.1.4.1.318.2.1.2.1.3:3	String	Read/Write
Config.communityString_04	1.3.6.1.4.1.318.2.1.2.1.3:4	String	Read/Write
Config.mconfigBOOTPEnabled	1.3.6.1.4.1.318.2.1.3.0:0	Long	Read Only
Config.mconfigClockDate	1.3.6.1.4.1.318.2.1.6.1.0:0	String	Read/Write
Config.mconfigClockTime	1.3.6.1.4.1.318.2.1.6.2.0:0	String	Read/Write
Config.mconfigNumTrapReceivers	1.3.6.1.4.1.318.2.1.1.0:0	Long	Read Only
Config.mconfigTFTPServerIP	1.3.6.1.4.1.318.2.1.4.0:0	String	Read/Write
Config.mcontrolRestartAgent	1.3.6.1.4.1.318.2.2.1.0:0	Long	Read/Write
Config.mfiletransferConfigFTPServerAddress	1.3.6.1.4.1.318.2.4.2.3.1.0:0	String	Read/Write
Config.mfiletransferConfigFTPServerPassword	1.3.6.1.4.1.318.2.4.2.3.3.0:0	String	Read/Write
Config.mfiletransferConfigFTPServerUser	1.3.6.1.4.1.318.2.4.2.3.2.0:0	String	Read/Write
Config.mfiletransferConfigSettingsFilename	1.3.6.1.4.1.318.2.4.2.1.1.0:0	String	Read/Write
Config.mfiletransferConfigTFTPServerAddress	1.3.6.1.4.1.318.2.4.2.2.1.0:0	String	Read/Write
Config.mfiletransferControlInitiateFileTransfer	1.3.6.1.4.1.318.2.4.3.1.0:0	Long	Read/Write
Config.mfiletransferStatusLastTransferResult	1.3.6.1.4.1.318.2.4.1.1.0:0	Long	Read Only
Config.newCodeAuthentViaTFTP	1.3.6.1.4.1.318.2.1.5.0:0	Long	Read Only
Config.receiverAddr_01	1.3.6.1.4.1.318.2.1.2.1.2:1	String	Read/Write
Config.receiverAddr_02	1.3.6.1.4.1.318.2.1.2.1.2:2	String	Read/Write
Config.receiverAddr_03	1.3.6.1.4.1.318.2.1.2.1.2:3	String	Read/Write
Config.receiverAddr_04	1.3.6.1.4.1.318.2.1.2.1.2:4	String	Read/Write
Config.receiveTrapType_01	1.3.6.1.4.1.318.2.1.2.1.6:1	Long	Read/Write
Config.receiveTrapType_02	1.3.6.1.4.1.318.2.1.2.1.6:2	Long	Read/Write
Config.receiveTrapType_03	1.3.6.1.4.1.318.2.1.2.1.6:3	Long	Read/Write
Config.receiveTrapType_04	1.3.6.1.4.1.318.2.1.2.1.6:4	Long	Read/Write
Config.severity_01	1.3.6.1.4.1.318.2.1.2.1.4:1	Long	Read Only
Config.severity_02	1.3.6.1.4.1.318.2.1.2.1.4:2	Long	Read Only
Config.severity_03	1.3.6.1.4.1.318.2.1.2.1.4:3	Long	Read Only

Config.severity_04	1.3.6.1.4.1.318.2.1.2.1.4:4	Long	Read Only
--------------------	-----------------------------	------	-----------

## Trap Messages

An agent within an SNMP-enabled device can send Trap Messages to report any serious events to a management control system. Any system with an IP address can be configured to receive trap messages from SNMP agents.

The SNMP agent within the Bulletin 1609 device can send trap messages to up to four management systems.

In this driver when the Bulletin 1609 UPS model has been selected, the following Object IDs can be used to set the IP address of the management control systems that are to receive the Trap Messages:

1.3.6.1.4.1.318.2.1.2.1.2:1  
 1.3.6.1.4.1.318.2.1.2.1.2:2  
 1.3.6.1.4.1.318.2.1.2.1.2:3  
 1.3.6.1.4.1.318.2.1.2.1.2:4

## Traps Created During Automatic Tag Generation

During [Automatic Tag Database Generation](#), the driver's auto-generation feature generates four of the most used **Trap Object IDs**:

1.3.6.1.2.1.11:TV	This is created under "SystemTraps" group.
1.3.6.1.4.1.318.2.3.3.0:TV	These are generated by the "Bulletin 1609 model" devices, hence they are created under the "UPSTraps" group.
1.3.6.1.4.1.318.2.3.10.0:TV	
1.3.6.1.4.1.318.2.3.3.0:TV	

**Note:** The A-B Bulletin 1609 driver supports a total of 10 Trap tags per device.

## Manually Setting Up Trap Tags

To set up Trap tags manually:

1. First make sure the SNMP agent is set up to send trap messages to the host where the A-B Bulletin 1609 driver is running. For example, if the host ID is 192.x.y.z, the SNMP agent must be configured to send trap messages to 192.x.y.x.
2. If the Bulletin 1609 UPS model was selected for this driver (not the **Generic Model**), the following Object IDs can be used to set the IP address of the management control system:

1.3.6.1.4.1.318.2.1.2.1.2:1  
 1.3.6.1.4.1.318.2.1.2.1.2:2  
 1.3.6.1.4.1.318.2.1.2.1.2:3  
 1.3.6.1.4.1.318.2.1.2.1.2:4

3. Add the desired trap tags to the server project. The format is:

1.3.6.x.x.x.x.x.x.x:x

## Error Descriptions

The following error/warning messages may be generated. Click on the link for a description of the message.

### Address Validation

[Missing address](#)

[Device address '<address>' contains a syntax error](#)

[Address '<address>' is out of range for the specified device or register](#)

[Device address '<address>' is not supported by model '<model name>'](#)

[Data Type '<type>' is not valid for device address '<address>'](#)

[Device address '<address>' is Read Only](#)

### Device Status Messages

[Device '<device name>' is not responding](#)

### Unable to write to '<address>' on device '<device name>'

#### Communication Messages

[Winsock Initialization Failed \(OS Error=n\)  
Winsock 1.1 or higher must be installed](#)

#### Device Specific Messages

[Failed to get response from device '<device>' for block tag '<tag>'](#)  
[Failed to get response from device '<device>' for tag '<tag>'](#)  
[Failed to send request for address '<address>' in device '<device>'](#)  
[Failed to send request for block tag '<tag>' in device '<device>'](#)  
[The address '<address>' is configured as Read Only in device '<device>'](#)  
[The request size or the returned value for Object ID '<ID>' in device '<device>' is too large](#)  
[The returned/write value for block ID '<ID>' in device '<device>' is too large](#)  
[The value written is not allowed at address '<address>' in device '<device>'](#)  
[UPS returned 'general error' for '<address>' in device '<device>'](#)  
[UPS returned 'no such name' error on block tag '<tag>' in device '<device>'. Deactivating block tag <tag>](#)  
[UPS returned 'no such name' error on '<tag>' in device '<device>'. Deactivating '<tag>'](#)  
[UPS returned unknown error for block tag '<tag>' in device '<device>'. Error number = '<number>'](#)  
[UPS returned unknown error for '<address>' in device '<device>'. Error number = '<number>'](#)

#### Automatic Tag Database Generation Messages

[Unable to generate a tag database for device <device name>](#)

### Address Validation

---

The following error/warning messages may be generated. Click on the link for a description of the message.

#### Address Validation

[Missing address](#)  
[Device address '<address>' contains a syntax error](#)  
[Address '<address>' is out of range for the specified device or register](#)  
[Device address '<address>' is not supported by model '<model name>'](#)  
[Data Type '<type>' is not valid for device address '<address>'](#)  
[Device address '<address>' is Read Only](#)

### Missing address

---

#### Error Type:

Warning

#### Possible Cause:

A tag address that has been specified statically has no length.

#### Solution:

Re-enter the address in the client application.

### Device address '<address>' contains a syntax error

---

#### Error Type:

Warning

#### Possible Cause:

A tag address that has been specified statically contains one or more invalid characters.

**Solution:**

Re-enter the address in the client application.

---

**Address '<address>' is out of range for the specified device or register**

---

**Error Type:**

Warning

**Possible Cause:**

A tag address that has been specified statically references a location that is beyond the range of supported locations for the device.

**Solution:**

Verify the address is correct; if it is not, re-enter it in the client application.

---

**Device address '<address>' is not supported by model '<model name>'**

---

**Error Type:**

Warning

**Possible Cause:**

A tag address that has been specified statically references a location that is valid for the communications protocol but not supported by the target device.

**Solution:**

1. Verify that the address is correct; if it is not, re-enter it in the client application.
2. Verify that the selected model name for the device is correct.

---

**Data Type '<type>' is not valid for device address '<address>'**

---

**Error Type:**

Warning

**Possible Cause:**

A tag address that has been specified statically has been assigned an invalid data type.

**Solution:**

Modify the requested data type in the client application.

---

**Device address '<address>' is Read Only**

---

**Error Type:**

Warning

**Possible Cause:**

A tag address that has been specified statically has a requested access mode that is not compatible with what the device supports for that address.

**Solution:**

Change the access mode in the client application.

---

**Device Status Messages**

---

The following error/warning messages may be generated. Click on the link for a description of the message.

**Device Status Messages**

[Device '<device name>' is not responding](#)

**Unable to write to '<address>' on device '<device name>'****Device '<device name>' is not responding**

---

**Error Type:**

Serious

**Possible Cause:**

1. The serial connection between the device and the host PC is broken.
2. The communication parameters for the serial connection are incorrect.
3. The named device may have been assigned an incorrect Network ID.

**Solution:**

1. Verify the cabling between the PC and the device.
2. Verify that the specified communication parameters match those of the device.
3. Verify that the Network ID given to the named device matches that of the actual device.

**Unable to write to '<address>' on device '<device name>'**

---

**Error Type:**

Serious

**Possible Cause:**

1. The serial connection between the device and the host PC is broken.
2. The communication parameters for the serial connection are incorrect.
3. The named device may have been assigned an incorrect Network ID.

**Solution:**

1. Verify the cabling between the PC and the device.
2. Verify that the specified communication parameters match those of the device.
3. Verify that the Network ID given to the named device matches that of the actual device.

**Communication Messages**

---

The following error/warning messages may be generated. Click on the link for a description of the message.

**Communication Messages**

[Winsock Initialization Failed \(OS Error=n\)](#)

[Winsock V1.1 or Higher Must Be Installed](#)

**Winsock Initialization Failed (OS Error = n)**

---

**Error Type:**

Fatal

**Possible Cause:**

The underlying network subsystem is not ready for network communication.

**Solution:**

Wait a few seconds and then restart the driver.

**Winsock v1.1 or higher must be installed to use the Allen-Bradley Ethernet Device Driver**

---

**Error Type:**

Fatal

**Possible Cause:**

The version number of the Winsock DLL found on the system is less than 1.1.

**Solution:**

Upgrade Winsock to version 1.1 or higher.

**Device Specific Messages**

---

The following error/warning messages may be generated. Click on the link for a description of the message.

**Device Specific Messages**

[Failed to get response from device '<device>' for block tag '<tag>'](#)

[Failed to get response from device '<device>' for tag '<tag>'](#)

[Failed to send request for address '<address>' in device '<device>'](#)

[Failed to send request for block tag '<tag>' in device '<device>'](#)

[The address '<address>' is configured as Read Only in device '<device>'](#)

[The request size or the returned value for Object ID '<ID>' in device '<device>' is too large](#)

[The returned/write value for block ID '<ID>' in device '<device>' is too large](#)

[The value written is not allowed at address '<address>' in device '<device>'](#)

[UPS returned 'general error' for '<address>' in device '<device>'](#)

[UPS returned 'no such name' error on block tag '<tag>' in device '<device>'. Deactivating block tag <tag>](#)

[UPS returned 'no such name' error on '<tag>' in device '<device>'. Deactivating '<tag>'](#)

[UPS returned unknown error for block tag '<tag>' in device '<device>'. Error number = '<number>'](#)

[UPS returned unknown error for '<address>' in device '<device>'. Error number = '<number>'](#)

**Failed to get response from device '<device>' for block tag '<tag>'**

---

**Error Type:**

Warning

**Possible Cause:**

1. The device was too busy processing the previous request.
2. The device might have lost the connection.

**Solution:**

1. The driver will automatically retry the request if the driver is set that way, and the retry may fix the problem.
2. Check the connection and connection settings.

**Failed to get response from device '<device>' for tag '<tag>'**

---

**Error Type:**

Warning

**Possible Cause:**

1. The device was too busy processing the previous request.
2. The device might have lost the connection.

**Solution:**

1. The driver will automatically retry the request if the driver is set that way, and the retry may fix the problem.
2. Check the connection and connection settings.

**Failed to send request for address '<address>' in device '<device>'**

---

**Error Type:**

Warning

**Possible Cause:**

The socket connection probably was not established.

**Solution:**

Check connection settings.

---

**Failed to send request for block tag '<tag>' in device '<device>'**

---

**Error Type:**

Warning

**Possible Cause:**

The socket connection probably was not established.

**Solution:**

Check connection settings.

---

**The address '<address>' is configured as Read Only in device '<device>'**

---

**Error Type:**

Warning

**Possible Cause:**

The object is configured as a Read Only item in the device even though the object is Read/Write.

**Solution:**

Request that the administrator change the object access type to Read/Write.

---

**The request size or the returned value for Object ID '<ID>' in device '<device>' is too large. Try changing request size**

---

**Error Type:**

Warning

**Possible Cause:**

The value to be returned or attempted to be written was larger than what the SNMP protocol/driver supports.

**Solution:**

Change the request size. If writing a string value, try a smaller size value. The driver supports a maximum of 255 characters.

---

**The returned/ write value for block ID '<ID>' in device '<device>' is too large. Maximum block size allowed is '<size>'**

---

**Error Type:**

Warning

**Possible Cause:**

The value to be returned or written was larger than what the SNMP protocol/driver supports.

**Solution:**

1. For a write value, try a smaller size value.
2. For a read value, the driver probably won't support the tag because the maximum length of read values supported is 255 characters.

---

**The value written is not allowed at address '<address>' in device '<device>'**

---

**Error Type:**

Warning

**Possible Cause:**

The attempted write value is probably out of range.

**Solution:**

Check the device manual for appropriate values that can be written to this address.

---

**UPS returned 'general error' for '<address>' in device '<device>'**

---

**Error Type:**

Warning

**Possible Cause:**

Part of the packet may have been lost during the transaction which resulted in the device not reading (rejecting) the packet.

**Solution:**

1. The driver will automatically retry the request if the driver is set that way, and the retry may fix the problem.
2. Check both the connection and the connection settings.

---

**The UPS returned 'no such name' error on block tag '<tag>' in device '<device>'.  
Deactivating block tag '<tag>'**

---

**Error Type:**

Warning

**Possible Cause:**

The device does not have any information on the requested block address.

**Solution:**

The driver will automatically deactivate the block tag.

---

**The UPS returned 'no such name' error on tag '<tag>' in device '<device>'.  
Deactivating tag '<tag>'**

---

**Error Type:**

Warning

**Possible Cause:**

The device does not have any information on the requested address.

**Solution:**

The driver will automatically deactivate the tag.

---

**The UPS returned unknown error for block tag '<tag>' in device '<device>'. Error  
number = '<number>'**

---

**Error Type:**

Warning

**Possible Cause:**

The device returned an error that is not listed in SNMP protocol.

**Solution:**

Check the connection settings.

**UPS returned unknown error for '<address>' in device '<device>'. Error number = '<number>'**

---

**Error Type:**

Warning

**Possible Cause:**

The device returned an error that is not listed in SNMP protocol.

**Solution:**

Check the connection settings.

**Automatic Tag Database Generation Messages**

---

The following error/warning messages may be generated. Click on the link for a description of the message.

**Automatic Tag Database Generation Messages**

[Unable to generate a tag database for device <device name>](#)

**Unable to generate a tag database for device <device name>**

---

**Error Type:**

Warning

**Possible Cause:**

Memory required for database generation could not be allocated. The process is aborted.

**Solution:**

Close unused applications and/or increase the amount of virtual memory and try again.

# Index

## - A -

Address '<address>' is out of range for the specified device or register. 28  
Address Descriptions 8  
Address Descriptions for Bulletin 1609 Model 8  
Address Validation 27  
Automatic Tag Database Generation 6  
Automatic Tag Database Generation Messages 33

## - C -

Cable Connection 3  
Communication Messages 29  
Communication Parameters 4  
Community 4

## - D -

Data type '<type>' is not valid for device address '<address>' 28  
Data Types Description 7  
Device '<device name>' is not responding 29  
Device address '<address>' contains a syntax error. 27  
Device address '<address>' is not supported by model '<model name>.' 28  
Device address '<address>' is read only 28  
Device Setup 3  
Device Specific Messages 30  
Device Status Messages 28  
DWord 7

## - E -

Error Descriptions 26

## - F -

Failed to get response from device '<device>' for block tag '<tag>' 30

Failed to get response from device '<device>' for tag '<tag>' 30

Failed to send request for address '<address>' in device '<device>' 30

Failed to send request for block tag '<tag>' in device '<device>' 31

## - H -

Help Contents 3

## - L -

Long 7

## - M -

Missing address 27

## - N -

Network 3  
Nonexistent Tag Errors 5

## - O -

Overview 3

## - T -

The address '<address>' is configured as read only in device '<device>' 31

The request size or the returned value for object ID '<ID>' in device '<device>' is too large 31

The returned/write value for block ID '<ID>' in device '<device>' is too large 31

The value written is not allowed at address '<address>' in device '<device>' 32

Traps 26

## - U -

Unable to generate a tag database for device '<device name>' 33

Unable to write to '<address>' on device '<device name>' 29

UPS returned 'general error' for '<address>' in device '<device>' 32

UPS returned 'no such name' error on '<tag>' in device '<device>'. Deactivating '<tag>' 32

UPS returned 'no such name' error on block tag '<tag>' in device '<device>'. Deactivating block tag '<tag>' 32

UPS returned unknown error for '<address>' in device '<device>'. Error number = '<number>' 33

UPS returned unknown error for block tag '<tag>' in device '<device>'. Error number = '<number>' 32

## **- W -**

Winsock Initialization Failed (OS Error=n) 29

Winsock V1.1 or higher must be installed 29