

In 60 Minutes You Can Be Exchanging ControlLogix PAC Data With Your Business System



**xCoupler Enterprise Appliance
Transaction Modules**



Bridging the Gap **Online**
DEVELOPMENT INC.

Headquarters

7209 Chapman Hwy
Knoxville, TN 37920 USA
phone 800.625.8678 (in the US)
international +1.865.251.5252
fax +1.865.579.4740

Europe

Galileo, 303-305, 4a Planta
08028 Barcelona Spain
phone +34 93 394 4462
cell +34 678 538 671
fax +34 93 439 8927

www.oldi.com



IBM Business Partner



xCoupler Modules – the Fast and Easy Way to Exchange Plant Floor Data with Business Systems.



Typical multi-tier patchwork system.



xCoupler module two-tier system in a PAC rack

Eliminates Multi-Tier Patchwork Systems and Programming

xCoupler modules eliminate cumbersome PC-based patchwork systems used to link hundreds of devices found on the factory floor with business systems. These modules eliminate the problems normally associated with multi-tier PC-based patchwork interfaces:

- Costly to develop in terms of complex hardware and software programming.
- Often are comprised of various proprietary systems that increase maintenance costs and limit expandability.
- Have problems delivering accurate data in a timely fashion.
- The open nature of these systems pose business system-wide security and virus threats.

Simple Two-Tier Approach

xCoupler modules snap into ControlLogix PACs to connect factory floor device data with business systems. Simple drag and drop software operation makes configuration fast and easy. Additional benefits of these modules include:

- Lower cost to buy and maintain than multi-tier patchwork systems.
- Eliminates a tier of temporary data storage compared to HMI or PC configurations.
- Easier to configure and maintain than multi-tier systems.
- Scalable to accommodate expansions.
- Provides timely and accurate bidirectional data.
- Proven reliability in 24/7 environments.
- Not susceptible to PC-type viruses.
- Operation cannot be changed or altered on the factory floor for greater security.
- Virtually maintenance-free.



When you need to exchange data between a ControlLogix® controller and a database or messaging system, there is no better choice than an xCoupler® module. It plugs into the ControlLogix chassis and connects to your business system via Ethernet. With a few mouse movements and keyboard strokes, you can have the xCoupler module exchanging data in about 60 minutes – all without programming.

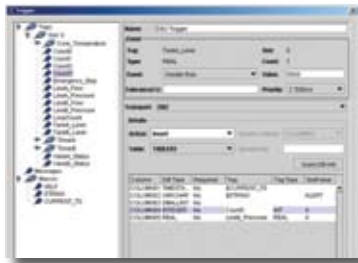
Wide Selection of Business and Communications System Adapters

xCoupler modules are available with a wide selection of adapters that are especially designed to operate in the architecture of a specific business system. They eliminate the need for middleware-type gateway or bridging systems and each one assures reliable delivery of messages as soon as they are ready, and as soon as the business applications are ready to receive them.

These adapters provide the confidence that your messages will be delivered once and once only to your application – without being revealed to unauthorized parties or exposed to tampering en route.

xCoupler modules and adapters help optimize these systems by aiding in the integration of business applications such as:

- Recipe downloads and confirmation
- High-speed weighing data collection
- Build orders/bill of material
- Dynamic warehousing
- Product tracking/reporting
- Sensor data reporting
- Alarms and notifications



Today, xCoupler modules are available with the following adapters:

Messaging Adapter

- IBM WebSphere® MQ & AS400 MQ

Database Adapters

- IBM DB2 and AS400 DB2, Oracle, Microsoft® SQL, MySQL

Communications Adaptors

- SMTP electronic mail interface, TCP/IP communications interface.

Additional adapters are continuously being added and custom adapters can be developed. For the current list, please visit www.aldi.com.

Flexible Factory Floor Modules

xCoupler modules for ControlLogix PACs were born on the factory floor. They are the result of Online Development's 15-year heritage of developing information exchange modules. These modules can be used with one or more of the enterprise adapters available.

Secure Operation

xCoupler software features high-security technology that is in use worldwide. It provides strategic authentication and access methods, as well as complete data encryption capabilities to keep information secure.

With its native-based linking system to specific servers, xCoupler also eliminates concerns about PC-type viruses.

Easy-to-Configure

Configuring the xCoupler using its WorkBench™ utility is easy. There are intuitive screens available for specific server types. Drag and drop operation makes configuration, diagnostics, transaction detail, status/transaction monitoring, and security tasks fast and easy.



xCoupler PLC/PAC modules are designed to snap into the backplanes of Allen-Bradley ControllLogix.